

LAMINATE

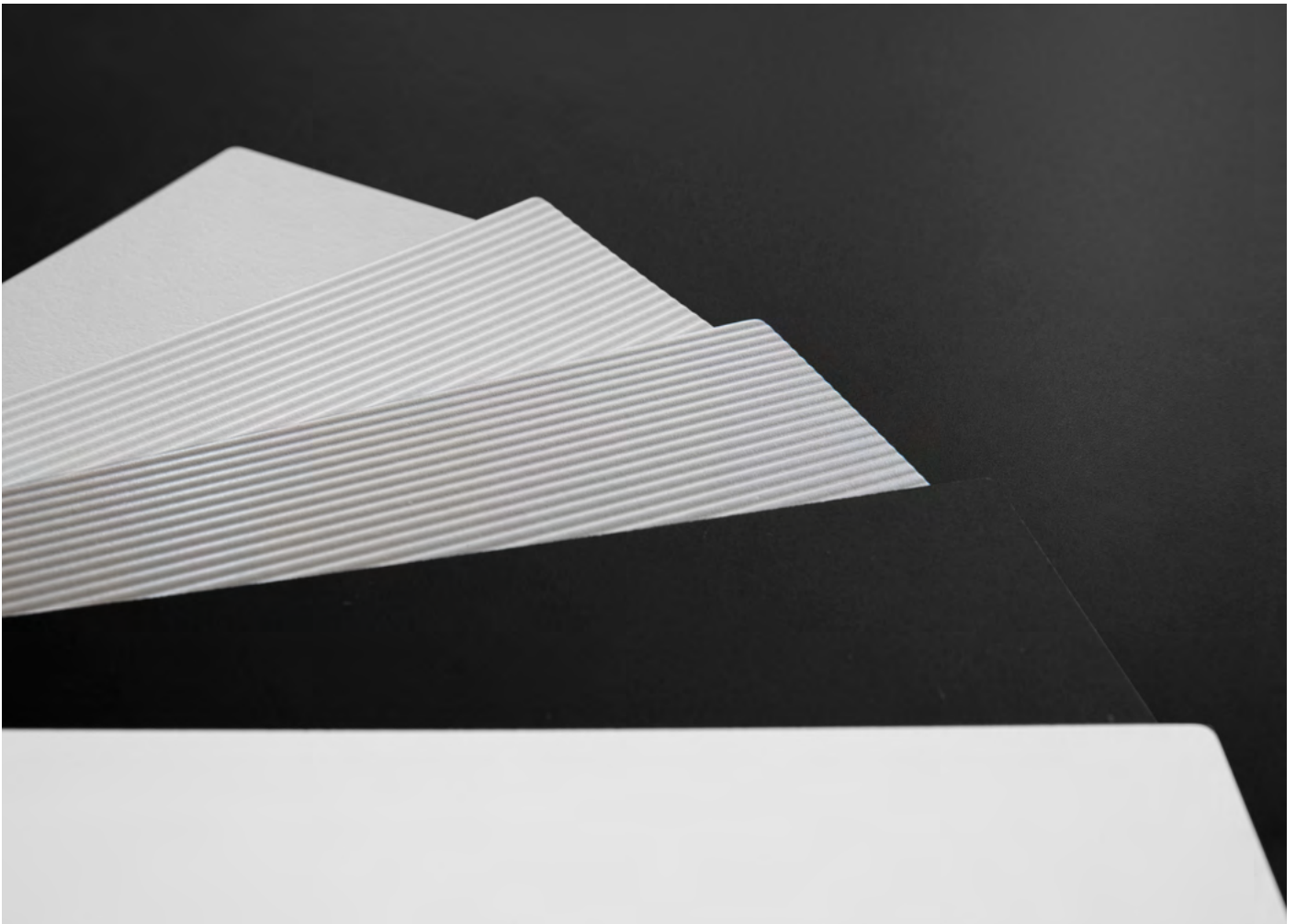
LAMINATI

HPL

High pressure laminate, or HPL, consists of layers of paper impregnated with phenolic and melamine resins, which are bonded together with a high-pressure and heat-protective coating and then applied to a substrate. The resulting surfaces are easy to clean and maintain, lightfast, odourless and resistant to alcohol, organic solvents and water.

Fenix®

Fenix® is a high-performance material, highly resistant, fingerprint proof and soft to the touch, it has a slightly matt surface that results in low light reflectivity. It consists of cellulose and innovative resins. Made of 70% layers of paper, the inner layers are impregnated with thermosetting resins, whereas the outer layers are treated with new generation acrylic resins, all subjected to heat and pressure at the same time.



WOOD

LEGNO

Lapalma primarily selects European oak, ash and Canaletto walnut certified according to the main Chain of Custody control standards (FSC). Sliced logs are directly inspected at our cutters' yards: the process of selecting and choosing the best pieces is entrusted to the experience of our employees, who then process individual sheets to obtain semi-finished products for Lapalma's end products.

At Lapalma, all the stages involved in the processing of wood products combine complex industrial technology with craftsmanship and experience. The outcome is a natural product that is controlled yet never identical, a natural wood type.

We use only matt open-pore acrylic varnishes to protect our wood finishes. They make products resistant while preventing any changes in the naturalness and aesthetic variety of this living material. Lots may therefore vary in colour and grain. This is not to be considered the result of faulty production but a value-added feature and a guarantee of the naturalness of our products.



METAL

METALLO

Working with metal, as well as wood, is in our company's DNA.

All metal components are made of partly recycled and totally recyclable alloys such as carbon steel, stainless steel and aluminium. All die-cast aluminium components are made of 94% recycled aluminium, which is then infinitely recyclable, whereas extruded profiles are made of primary aluminium. We use AISI 304 stainless steel, a stainless steel alloy, which is resistant to most aggressive agents and is finished with fine glass bead blasting.

The colour range of our metals consists of polyester powder coatings featuring a high degree of surface coverage, excellent resistance and good protection for products.



PLASTICS

PLASTICHE

The materials we use to give shape to our furnishing elements include various types of high-quality plastics, selected for their high-performance. Lapalma has always been committed to reducing its use of plastic materials, bearing in mind, however, that plastic is not considered a material harmful to the environment when used for furniture that is intended to have a long life and then be recycled at the end of it. This is why the most widely used plastics are polypropylene and polyurethane, both recyclable. Some of our single-structures are made of moulded Baydur, a structural rigid polyurethane that is recyclable and has superior mechanical properties.

Recycled polypropylene

We have also introduced 75% - 85% recycled polypropylene to our collection. It is obtained from recovering plastics from separated waste collection processes. We have decided not to process it with other colours in order to make it recyclable at the end of its life.



MARBLE AND CONCRETE

MARMO E CEMENTO

Marble

The Lapalma collection includes white Carrara marble and matt black Marquina marble. As marble is a natural material, each product made of marble has a unique colour and texture.

Concrete

All cement bases are cast by hand into a mould with artisan care, each item is a unique piece: fibre-reinforced, finely sandblasted, with additives added to make it resist even the most common staining agents.



laccati / lacquered / lackiert / laqué / lacado



LW white LN black L4 perla L5 celeste L6 mattone L7 caffè L8 oliva L9 tortora

laminati / laminate / Laminat / lamifié / laminado



FW laminato fenix 0,9 bianco
white laminate
Laminat weiß
lamifié blanc
laminado blanco

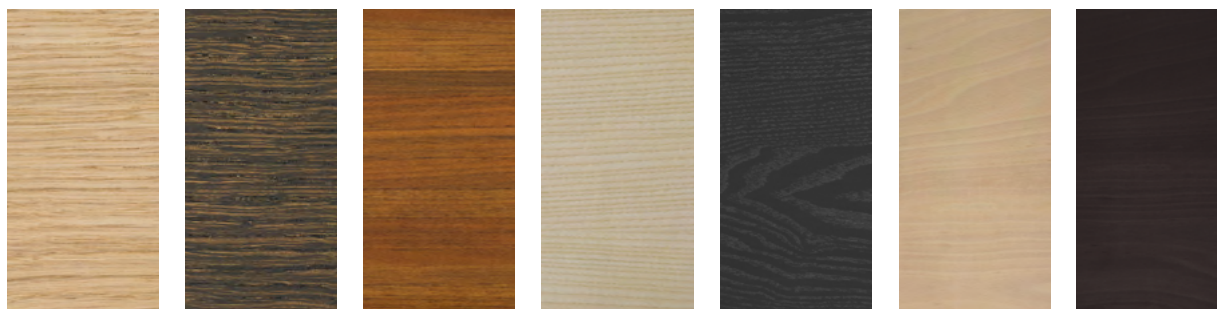
FN laminato fenix 0,9 nero
black laminate
Laminat schwarz
lamifié noir
laminado negro

406 laminato abet 0,9 bianco
white laminate
Laminat weiß
lamifié blanc
laminado blanco

877 millerighe alluminio
aluminium
Aluminium
aluminium
aluminio

406 millerighe bianco
white
weiß
blanc
blanco

legno / wood / Holz / bois / maderá



VS rovere sbiancato
blanched oak
Eiche gebleicht
chêne blanchi
roble blanqueado

VL rovere noce
oak dark walnut
Eiche dunkel
nußbaum
chêne teinté wengé
roble nogal

NC noce Canaletto
Canaletto walnut
Nußbaum Canaletto
noyer Canaletto
nogal natural

FR frassino naturale
natural ash
Esche natur
frêne naturel
fresno natural

NO nero poro aperto
black open pore
Eiche schwarz gebeizt
noir pore ouvert
negro poro abierto

G faggio sbiancato
blanched beech
Buche gebleicht
hêtre blanchi
haya blanqueada

GL faggio noce scuro
beech dark walnut
Buche dunkel
nußbaum
hêtre teinté wengé
haya nogal oscuro

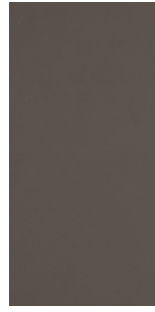
HPL 10 mm



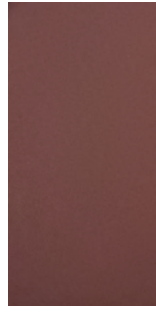
HFW
Fenix® bianco
Fenix® white
Fenix® weiß
Fenix® blanc
Fenix® blanco



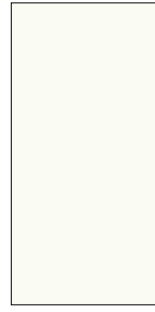
HFN
Fenix® nero
Fenix® black
Fenix® schwarz
Fenix® noir
Fenix® negro



HFG
Fenix® grigio
londra

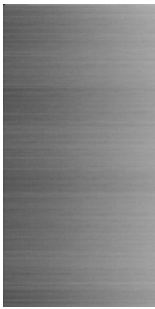


HFR
Fenix® rosso jaipur



H406
Bianco
White
Weiß
Blanc
Blanco

metalli / metal / Metall / metal / metal



acciaio inox
micropallinato
stainless steel
sandblasted
Edelstahl
sandgestrahlt
acier inox microbillé
acero inoxidable
arenado



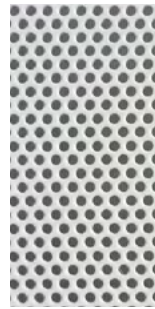
acciaio inox tela
di lino
stainless steel
linen-pattern
Edelstahl
leinenstruktur
acier inox toile de lin
acero inoxidable
tela de lin



cromo satinato
mat chromed
matt verchromt
chromé mat
cromado mate

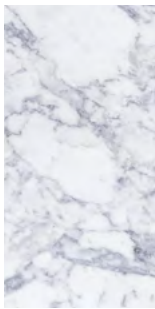


alluminio
micropallinato
aluminium
sandblasted
Aluminium
sandgestrahlt
aluminium
microbillé
aluminio arenado

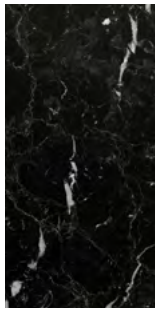


lamiera forata
perforated metal
perforiertes Metall
métal perforé
metal perforado

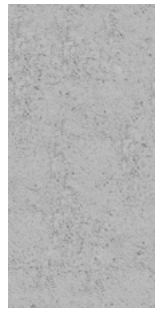
altre finiture / other finishes / weitere Ausführungen / autres finitions / otros acabados



bianco Carrara
white Carrara
Carrara-Marmor
blanc Carrara
blanco Carrara



nero Marquina
black Marquina
Marquina-Marmor
noir Marquina
negro Marquina



cemento
concrete
Zement
béton
cemento

verniciature a polvere / powder coating / pulverlackiert / laqué en poudre / lacadura en polvo



05
black
RAL 9005

03
white
RAL 9016

02
senape
RAL 1023

12
rubino
NCS S 2570R

14
blu notte
NCS S 7020-R60B

16
verde petrolio
NCS S 5540B

18
grigio medio
NCS S 6500-N



20
perla
NCS 1502Y

21
celeste
NCS 2010-B10G

22
mattone
NCS 3560-Y70R

23
caffè
NCS 8010-Y50R

24
oliva
NCS 7020-G50Y

25
tortora
402C

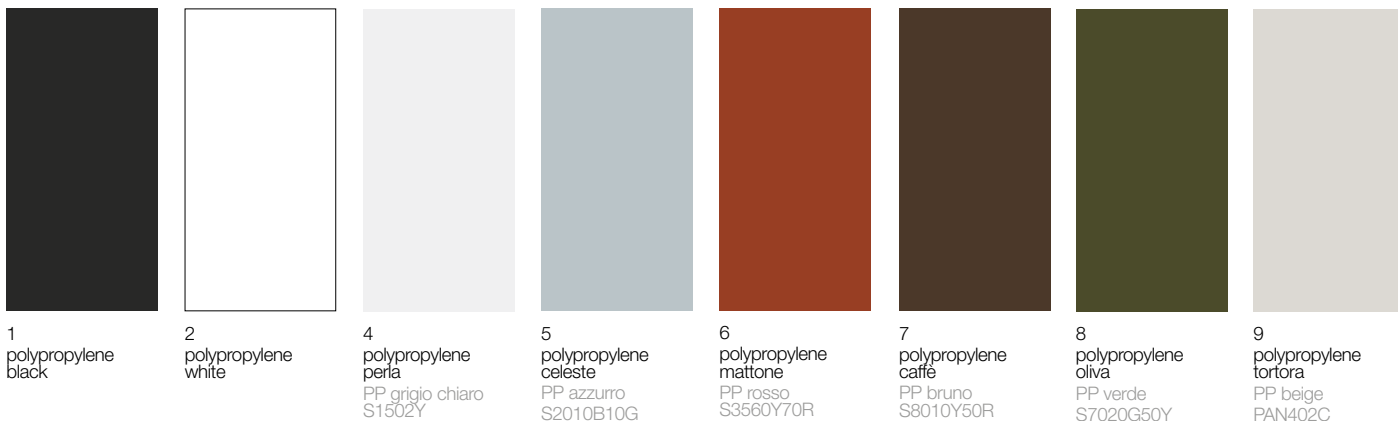
poliuretano integrale morbido / polyurethane /
Polyurethan / polyuréthane / poliuretano



PU
poliuretano grigio
polyurethane grey
Polyurethan grau
polyuréthane gris
poliuretano gris

PN
poliuretano nero
polyurethane black
Polyurethan
schwarz
polyuréthane noir
poliuretano negro

plastiche / plastics / Kunststoff / plastiques / plástica



1 polypropylene black

2 polypropylene white

4 polypropylene perla
PP grigio chiaro
S1502Y

5 polypropylene celeste
PP azzurro
S2010B10G

6 polypropylene mattone
PP rosso
S3560Y70R

7 polypropylene caffè
PP bruno
S8010Y50R

8 polypropylene oliva
PP verde
S7020G50Y

9 polypropylene tortora
PP beige
PAN402C



3 recycled grey polypropylene

Application

Indoor and outdoor use.

Description

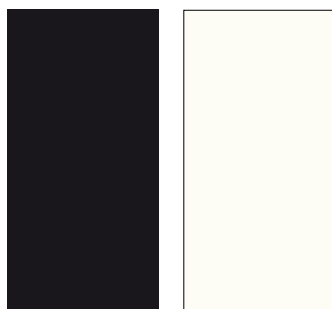
Recycled polypropylene is obtained thanks to a recycling process using up to 75% - 95% of recycled material.

Care

Dust with a soft and dry cloth for the normal cleaning. Never use abrasive or aggressive products like solvents, acid or basic solutions or ammonia. Any liquid spilt on the product must be wiped up immediately. Any changes in the surface and in colours may occur under particular conditions of weather exposure and cannot be considered a quality issue.

Samples are purely indicative because recycled polypropylene color can vary widely from grey to a lighter color.

Baydur®



N
Baydur® nero
Baydur® black
Baydur® schwarz
Baydur® noir
Baydur® negro

W
Baydur® bianco
Baydur® white
Baydur® weiß
Baydur® blanc
Baydur® blanco

lapalma

via majorana 26
35010 cadoneghe (PD), italy
t.: +39 049 702788
info@lapalma.it
www.lapalma.it