

FABRIC

TESSUTO

We select fabrics that adorn the Lapalma collection by applying the criteria of softness, quality and resistance. With their yarns and textures, they offer Italian style that crosses boundaries, leading to emotions in all environments where they are included. To guarantee high performance, we select fabrics with abrasion resistance starting from >50,000 Martindale (many exceed even 100,000 cycles), fire-resistance and light resistance.

Fabric categories

The fabrics are classified according to separate categories of price bands. The range of materials used includes 100% polyester Trevira, mixed wool, technical yarns such as polyamide, as well as 100% virgin wool. The range also includes Iris fabric made of 100% recycled PET.

Customer fabric

Thanks to our tailoring skills, we can provide a customised service. We can upholster the products you choose with customer fabric. You just need to send us an A4 size sample so we can verify feasibility. If accepted, we will ask for a length of fabric in order to make a trial upholstered element. A surcharge will be made for patterned fabrics.



tessuto / fabric / Stoff / tissu / tejido

Cat A - Jet FIDIVI

Application

Contract and domestic use.

Description

Composition:
100% Polyester - Trevira CS®
Width: 140 cm
Weight: 260 g/m2

Tests

Abrasion
UNI EN ISO 12947-2 65000 ± 10% rubs

Pilling
UNI EN ISO 12945-2 5 (Standard picture)
Tolerance: from 4 to 5

Colour fastness
to rubbing UNI EN ISO 105-X12
(4/5 grey scale)
Tolerance: from 4 to 5
to light UNI EN ISO 105-B02 6 (Blue scale)
Tolerance: from 5 to 8

Flame resistance

C1
B1
M1
CRIB 5
EN 1021/1-2
IMO Res. A 652 (16) Part 8
IMO Res. A 471 (XII) Part 7
NF D 60013 Class AM 18

Care

Dry clean or clean with foam detergents.

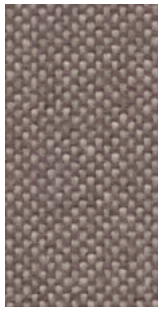
Samples are purely indicative because of natural inconsistencies that occur in the raw materials. As a result there may be small differences in the product delivered.



Cat A - Jet FIDIVI



2024



9109



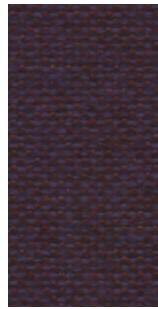
9108



2012



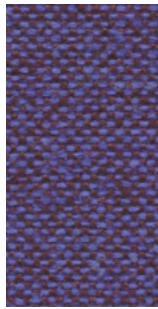
2010



9607



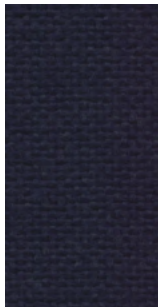
9605



9606



9604



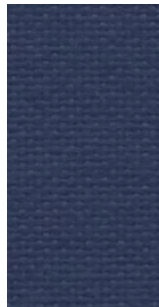
6098



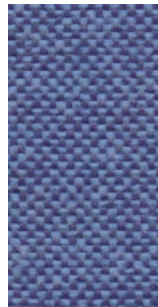
9603



9602



6013



9601



6095



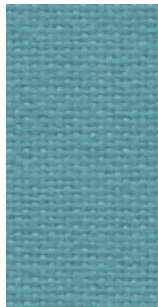
6056



9600



9610



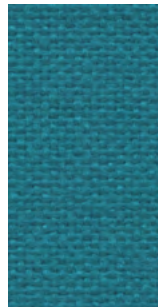
6007



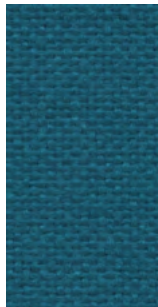
9609



9608



6091



6014



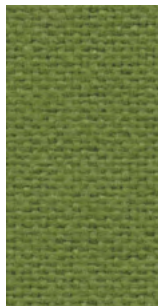
9701



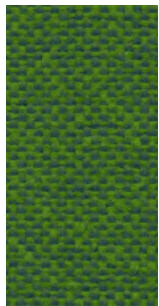
7041



9702



7025



9704



7014



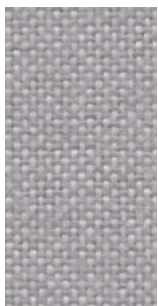
7034



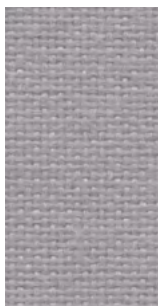
9703



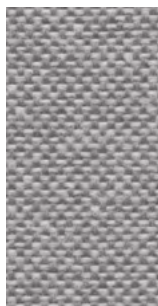
8001



9803



8078



9804



9805



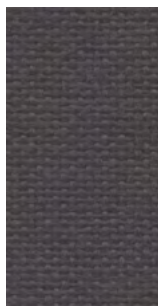
8009



9294



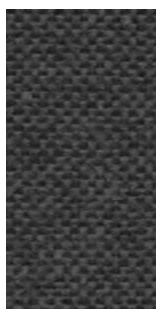
9281



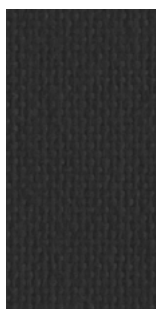
8017

tessuto / fabric / Stoff / tissu / tejido

Cat A - Jet FIDIVI



9806



8033

tessuto / fabric / Stoff / tissu / tejido

Cat A - Maya FIDIVI

Application

Contract and domestic use.

Description

Composition:
100% Polyester - Trevira CS®

Width: 140 cm

Weight: 420 g/m2

Tests

Abrasion
UNI EN ISO 12947-2 100000 ± 10% rubs

Pilling
UNI EN ISO 12945-2 5 (Standard picture)
Tolerance: from 4 to 5

Colour fastness
to rubbing UNI EN ISO 105-X12
(4/5 grey scale)
Tolerance: from 4 to 5
to light UNI EN ISO 105-B02 6 (Blue scale)
Tolerance: from 5 to 8

Flame resistance

C1
B1
M1
CRIB 5
EN 1021/1-2
IMO Res. A 652 (16) Part 8
IMO Res. A 471 (XII) Part 7
BS 7176 Medium Hazard
NF D 60013 Class AM 18

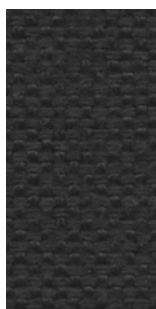
Care

Dry clean or clean with foam detergents.

Samples are purely indicative because of natural inconsistencies that occur in the raw materials. As a result there may be small differences in the product delivered.



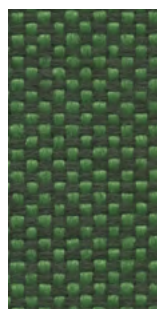
Cat A - Maya FIDIVI



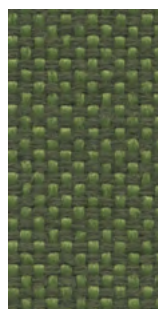
9805



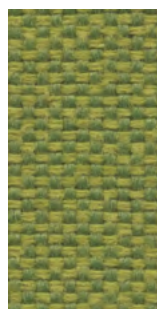
7020



9704



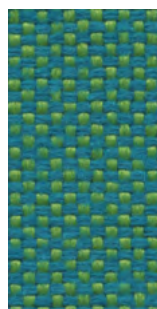
9703



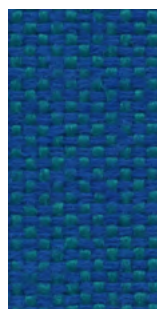
9702



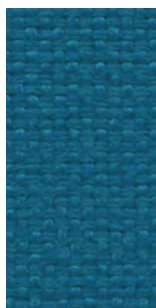
7009



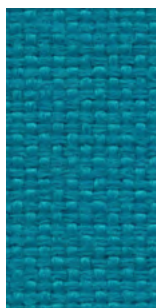
9705



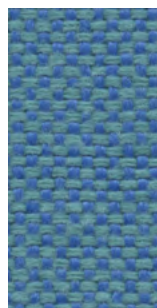
9602



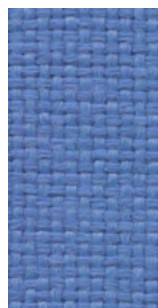
6014



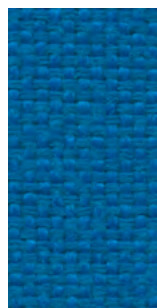
6091



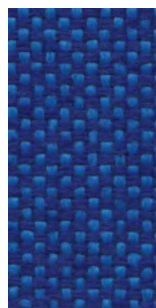
9601



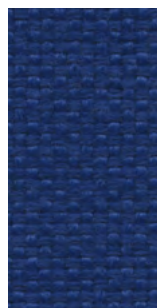
6006



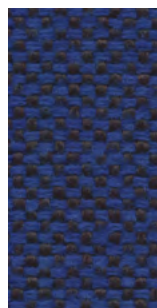
6075



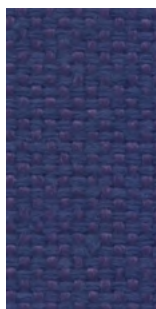
9603



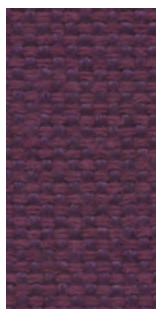
6080



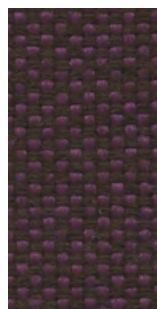
9604



9501



9503



9502

tessuto / fabric / Stoff / tissu / tejido

Cat A - Medley GABRIEL

Design

Mette Krebs Petersen

Application

Offices, hotels,
institutions, domestic use.

Description

Composition:
100% Polyester

Width: 140 cm

Weight: app. 510 g/lin.m

Tests

Abrasion
App. 75.000 Martindale rubs
EN ISO 12947-2

Pilling
Note 4, EN ISO 12945-2

Light fastness
Note 5-7, ISO 105-B02

Flame resistance
BS EN 1021 1&2
BS 5852 Part 1 0,1 Cigarette & match
California Bulletin CAL 117-E-Class 1
Class Uno UNI 9175 Class 1 | EMME
CA TB 117-2013
ÖNORM B 3825-B2-3800-Q1 UK

Care

Dry clean or clean with foam
detergents.

Samples are purely indicative because of
natural inconsistencies that occur in the
raw materials. As a result there may be
small differences in the product delivered.



66008



60999



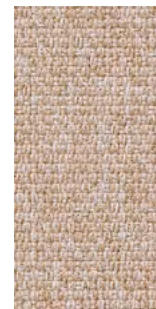
60167



60004



60003



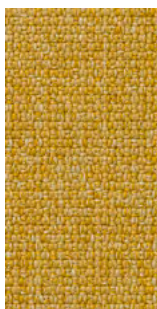
61189



61002



61003



62054



67002



61004



68005



68002



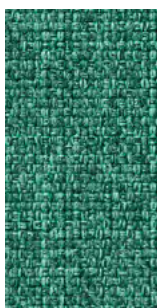
62002



68114



68115



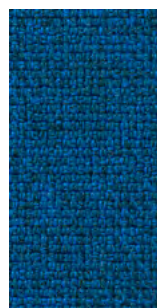
67054



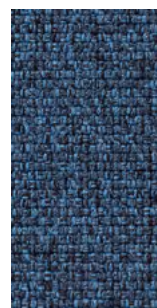
67053



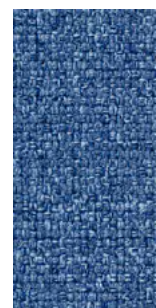
67006



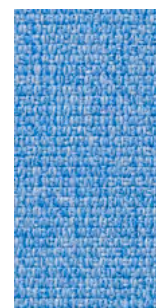
66007



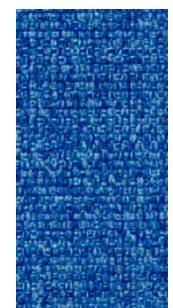
66010



66144



67052

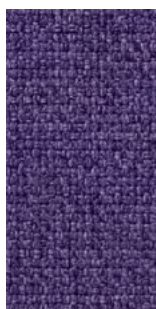


66009

Cat A - Medley GABRIEL



66145



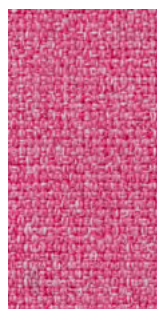
65086



65012



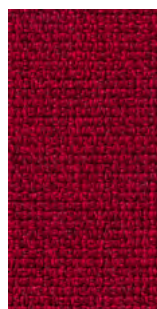
65011



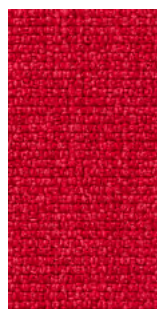
64124



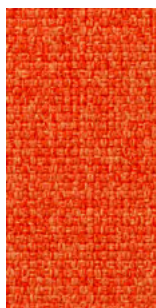
64125



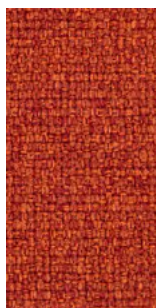
64123



64019



63013



63017



63016



63063



63064

tessuto / fabric / Stoff / tissu / tejido

Cat B - Capture GABRIEL

Application

Contract and domestic use.

Description

Composition:
85% new Zealand wool, 15% polyamide
Width: 140 cm
Weight: app. 475 g/lin.m

Tests

Abrasion
App. 200.000 Martindale rubs
EN ISO 12947

Pilling
Note 4-5, EN ISO 12945

Light fastness
Note 5-7, ISO 105-B02

Flame resistance
EN 1021 1/2
BS 5852 Part 1
BS 5852, part 5 (with treatment)
DIN 4102 B2
UNI 9175/UNI 9176, 1 I-M
US Cal. Tech. Bull. 117.2013

Care

Dry clean or clean with foam
detergents.

Samples are purely indicative because of natural inconsistencies that occur in the raw materials. As a result there may be small differences in the product delivered.



Cat B - Capture GABRIEL



6901



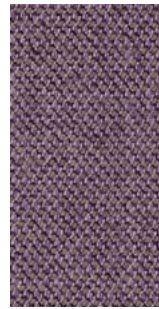
4801



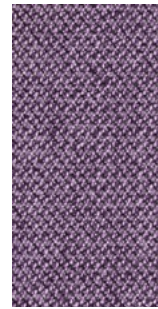
6701



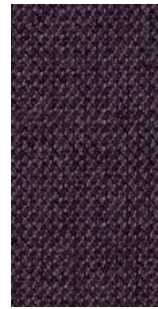
6302



6202



4501



7001



5201



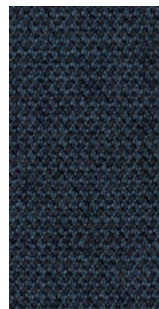
4901



4902



6602



6001



5002



5001



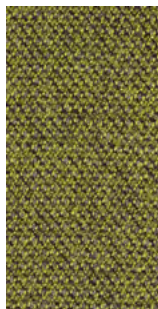
6601



7101



5101



5301



6501

tessuto / fabric / Stoff / tissu / tejido

Cat B - Crisp GABRIEL

Application

Contract and domestic use.

Description

Composition:
93% new Zealand wool, 7% polyamide
Width: 140 cm
Weight: app. 460 g/lin.m

Tests

Abrasion
App. 200.000 Martindale rubs
EN ISO 12947-2

Pilling
Note 4-5, EN ISO 12945-2

Light fastness
Note 5-7, ISO 105-B02

Flame resistance
EN 1021 1/2
BS 5852 Part 1 0,1
UNI 9175 1 I-M
US Cal. Tech. Bull. 117.2013
IMO MSC 307(88)

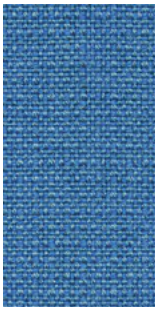
Care

Dry clean or clean with foam
detergents.

Samples are purely indicative because of
natural inconsistencies that occur in the
raw materials. As a result there may be
small differences in the product delivered.



Cat B - Crisp GABRIEL



4601



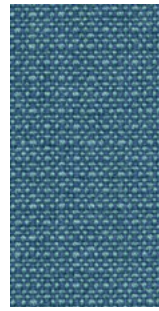
4122



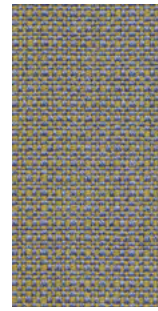
4741



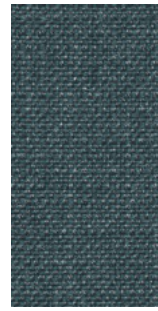
4751



4602



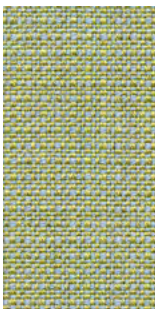
4603



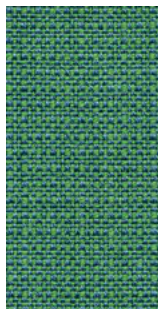
4723



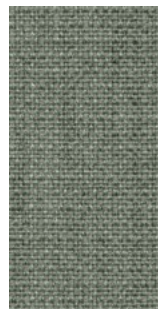
4731



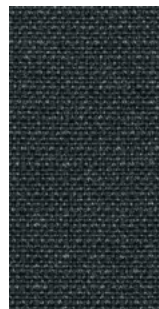
4201



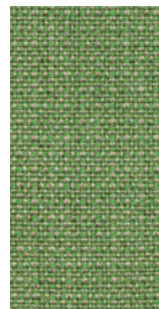
4605



4752



4761



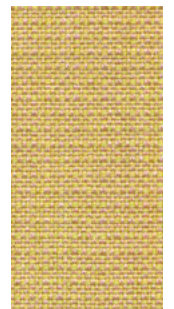
4117



4203



4211



4771



Cat B - Nattè SUNBRELLA

Application

Contract and domestic use.

Description

Composition:
100% Sunbrella® Acrylic
Width: 140 cm
Weight: app. 385 g/lin.m

Tests

Water-Repellent
Spray test ISO 4920 class 5
Colour fastness
UV indoor ISO105B02 class 8
Weather outdoor ISO105B04 1000H
Class 4-5
Dry friction ISO105X12 Class 5

Care

Dry clean or clean with foam
detergents.

Samples are purely indicative because of natural inconsistencies that occur in the raw materials. As a result there may be small differences in the product delivered.





Cat B - Iris RADA

Application

Contract and domestic use.

Description

Composition:
100% PET RECYCLED
(made with recycled plastic bottles)
Width: 140 cm
Weight: app. 800 g/lin.m

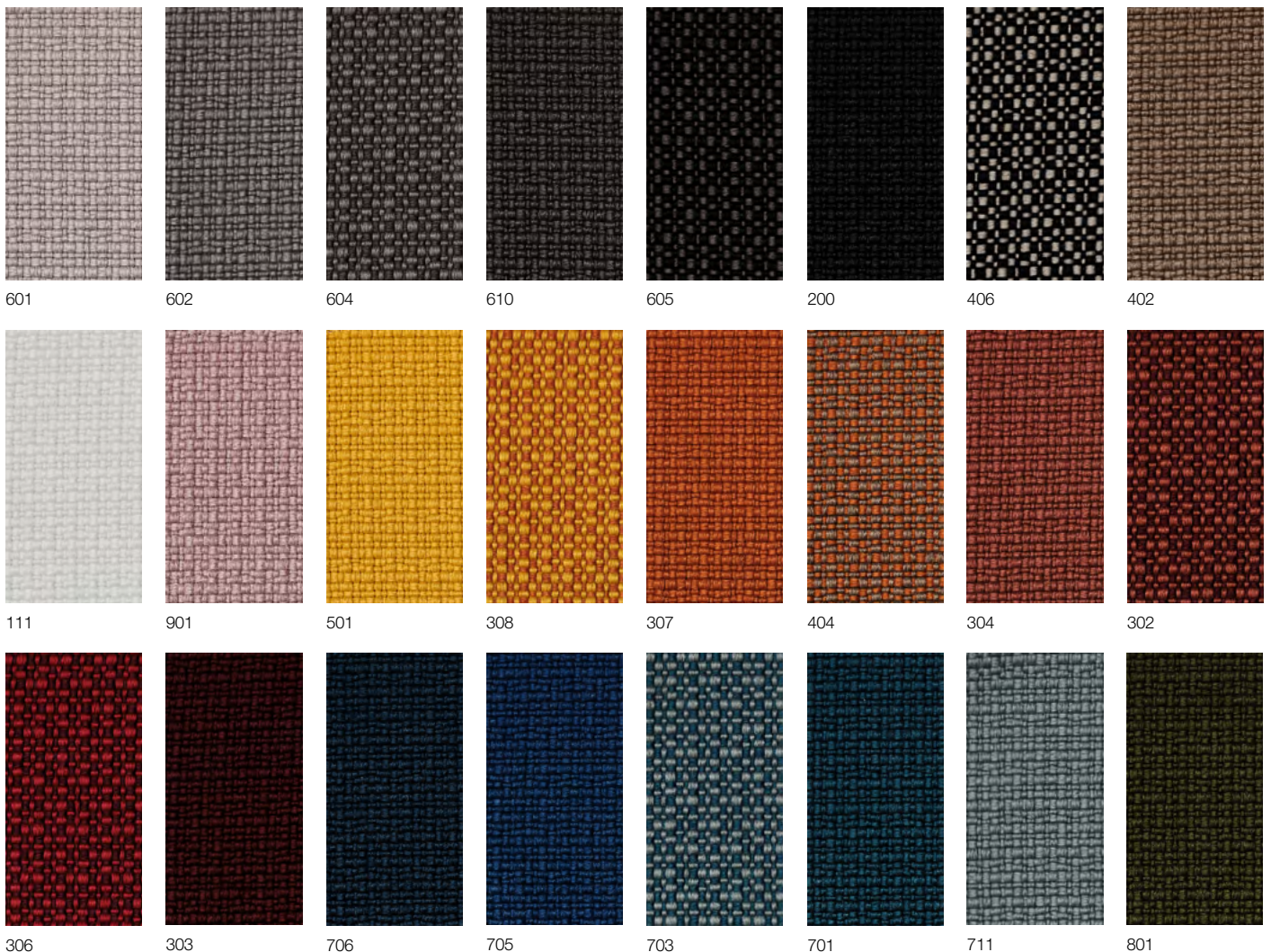
Tests

Abrasion
App. 100.000 Martindale rubs
EN ISO 12947
Pilling
dry 4-5, EN ISO 12945
wet 4, EN ISO 12945
Light fastness 7, ISO 105-B02
Flame resistance
EN 1021-1/2
BS 5852, flame
BS 5852, cigarette test
IMO FTP-8 Res.A652
UNI 9175, class 1 I-M
US Cal. Tech. Bull. 117.2013
Flame retardants
According to GB/T 24279-1:2018

Care

Dry clean or clean with foam detergents.

Samples are purely indicative because of natural inconsistencies that occur in the raw materials. As a result there may be small differences in the product delivered.



tessuto / fabric / Stoff / tissu / tejido

Cat C - Canvas 2 KVADRAT

Design

Giulio Ridolfo

Application

Offices, hotels, institutions, domestic use.

Description

Composition:
90% new wool, 10% nylon
Yarn type: Worsted
Binding: Semi-plain weave
Width: 140 cm
Weight: app. 480 g/lin.m

Tests

Abrasion
App. 100.000 Martindale rubs
EN ISO 12947
Pilling
Note 4-5, EN ISO 12945
Light fastness
Note 5-7, ISO 105-B02

Flame resistance

EN 1021-1/2
BS 5852 part 1
BS 5852, ignition source 2-3
DIN 4102 B2
Önorm B1/Q1
NF D 60 013
UNI 9175, 1IM
US Cal. Tech. Bull. 117
IMO A.652(16)

Care

Dry clean or clean with foam detergents.

Samples are purely indicative because of natural inconsistencies that occur in the raw materials. As a result there may be small differences in the product delivered.



Cat C - Canvas 2 KVADRAT



684



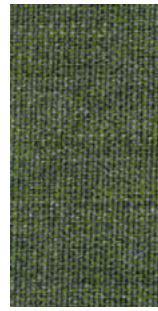
764



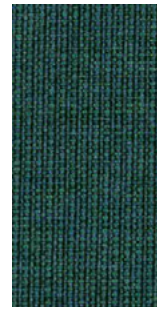
854



996



974



984



364



674



694



654



576



644



356



614



566



546



556



454



254



936



374

tessuto / fabric / Stoff / tissu / tejido

Cat C - Clara 2 KVADRAT

Design

Anne Birgitte Hansen

Application

Offices, hotels,
institutions, domestic use.

Description

Composition:
92% new wool worsted, 8% nylon
Yarn type: Staple, worsted
Binding: Semi-plain weave
Width: 138 cm
Weight: app. 400 g/lin.m

Tests

Abrasion
App. 80.000 Martindale rubs,
EN ISO 12947

Pilling
Note 4, EN ISO 12945

Light fastness
Note 5-7, ISO 105-B02

Flame resistance
EN 1021-1/2
BS 5852, ignition source 2-3
DIN 4102 B2
NF D 60 013
UNI 9175 11M
US Cal. Tech. Bull. 117, Sec. E
NFPA 260
IMO A.652(16)

Care

Vacuuming and dry cleaning.

Samples are purely indicative because of natural inconsistencies that occur in the raw materials. As a result there may be small differences in the product delivered.



tessuto / fabric / Stoff / tissu / tejido

Cat C - Fiord 2 KVADRAT

Design

Louise Sigvardt & Tone Barnung

Application

Offices, hotels,
institutions, domestic use.

Description

Composition:
92% new wool, 8% nylon
Yarn type: Worsted
Binding: Dobby
Width: App. 140 cm (app. 55 inches)
Weight: App. 500 g/lin.m

Samples are purely indicative because of natural inconsistencies that occur in the raw materials. As a result there may be small differences in the product delivered.

Tests

Abrasion
App. 60.000 Martindale rubs
EN ISO 12947

Pilling
Note 4-5, EN ISO 12945

Light fastness
Note 5-7, ISO 105-B02

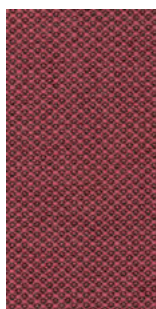
Flame resistance
EN 1021-1/2
BS 5852 part 1
DIN 4102 B2
NF D 60 013
UNI 9175 1IM
US Cal. Bull. 117-2013
IMO FTP Code 2010:Part 8
With flame retardant treatment:
BS 5852 Crib 5

Care

Vacuuming and dry cleaning



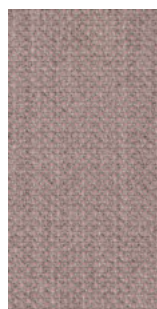
Cat C - Fiord 2 KVADRAT



662



642



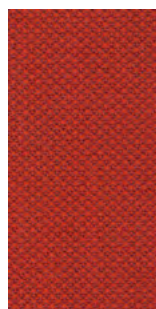
521



551



581



571



562



672



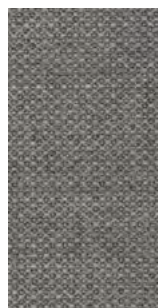
201



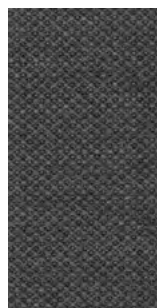
101



251



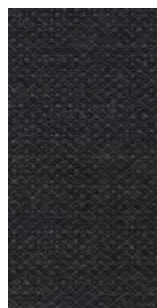
151



171



121



191

tessuto / fabric / Stoff / tissu / tejido

Cat C - Hallingdal 65 KVADRAT

Design

Nanna Ditzel

Application

Offices, hotels,
institutions, domestic use.
Great durability

Description

Composition:
70% new wool, 30% viscose

Yarn type: Stapel

Binding: Plain

Width: 130 cm

Weight: app. 795 g/lin.m

Samples are purely indicative because of natural inconsistencies that occur in the raw materials. As a result there may be small differences in the product delivered.

Tests

Abrasion
App. 100.000 Martindale rubs
EN ISO 12947

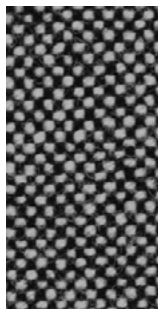
Pilling
Note 3, EN ISO 12945

Light fastness
Note 5-7, ISO 105-B02

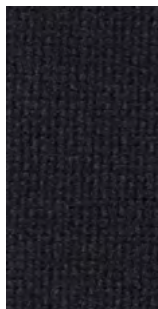
Flame resistance
EN 1021-1/2
BS 5852, ignition source 2-5
DIN 4102 B2
Onorm B1/Q1
UNI 9175/UNI 9176, 1IM
US Cal. Tech. Bull. 117
IMO A.652(16)

Care

Dry clean or clean with foam
detergents.



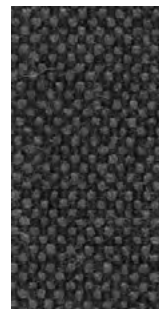
166



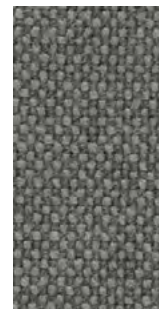
190



180



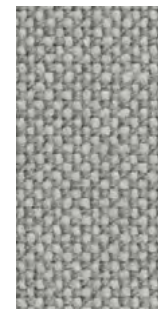
173



153



143



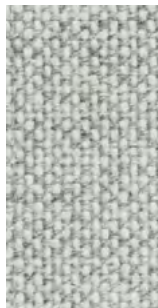
123



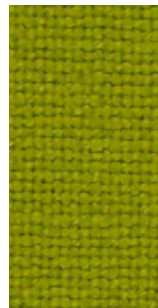
113



103



110



907



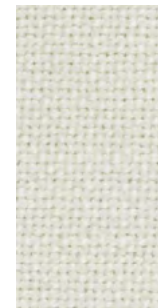
420



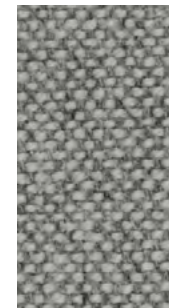
457



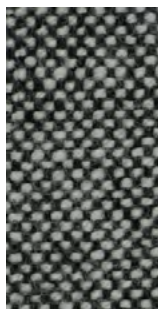
407



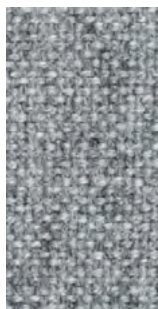
100



116



126



130



227



224



220



200



270

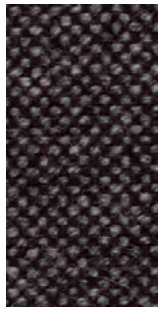


350

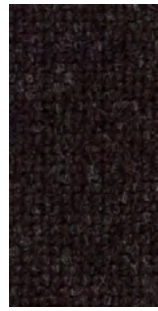
Cat C - Hallingdal 65 KVADRAT



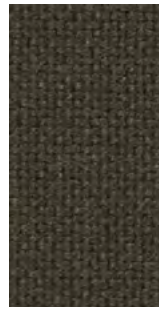
370



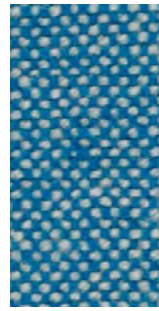
368



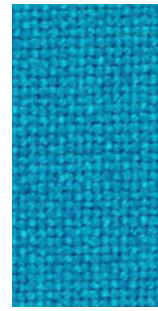
376



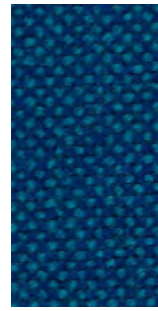
390



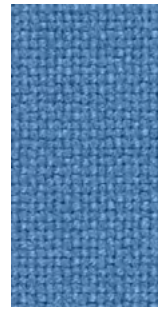
840



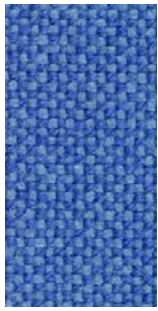
850



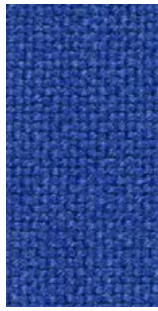
810



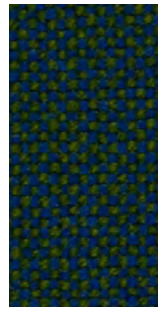
723



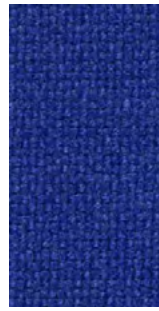
733



750



890



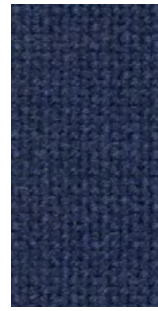
753



754



773



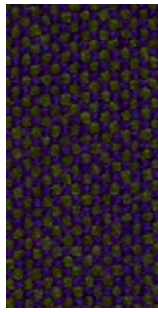
764



763



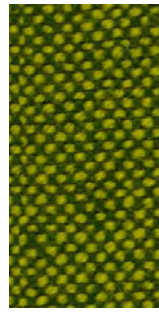
702



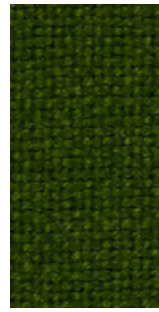
968



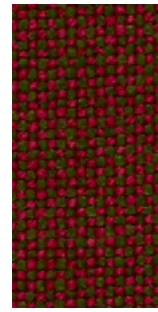
944



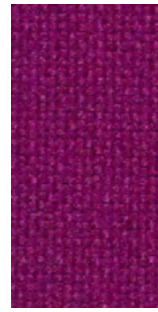
980



960



660



563



573



694



687



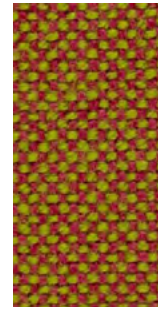
657



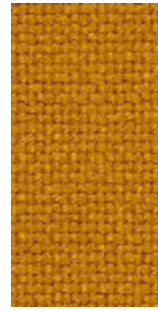
674



680



526



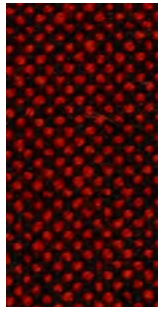
547



590



600



596

tessuto / fabric / Stoff / tissu / tejido

Cat C - Remix 3 KVADRAT

Design

Giulio Ridolfo

Application

Offices, hotels,
institutions, domestic use.
Great durability

Description

Composition:
90% new wool, 10% nylon

Yarn type: Stapel, worsted

Binding: Plain weave

Width: 140 cm

Weight: app. 460 g/lin.m

Samples are purely indicative because of natural inconsistencies that occur in the raw materials. As a result there may be small differences in the product delivered.

Tests

Abrasion
App. 100.000 Martindale rubs,
EN ISO 12947

Pilling
Note 3-4, EN ISO 12945

Light fastness
Note 5-7, ISO 105-B02

Flame resistance
EN 1021-1/2
BS 5852, ignition source 2-3
Onorm B1/Q1
UNI 9175, 1IM
Cal. Tech. Bull. 117, Sec. E
IMO A.652(16)

Care

Dry clean or clean with foam
detergents.



0575/13

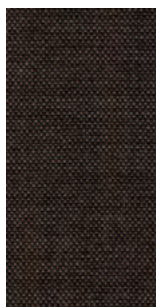


Flame Resistant

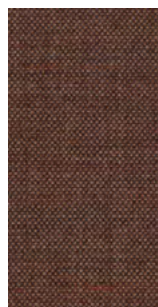


EU
Ecolabel
www.ecolabel.eu

06/16/24



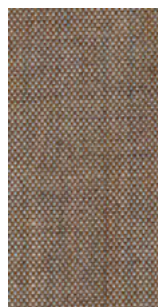
356



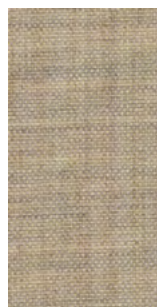
346



326



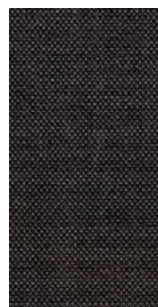
242



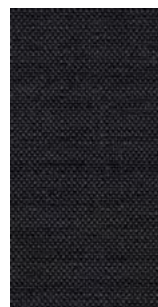
223



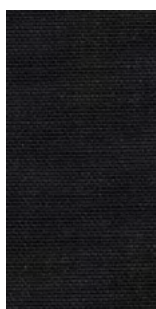
233



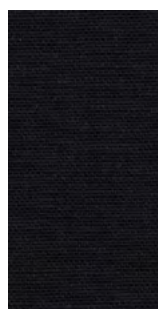
276



286



393



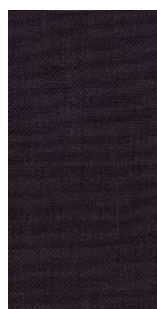
296



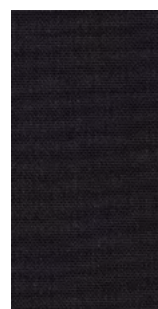
686



682



692



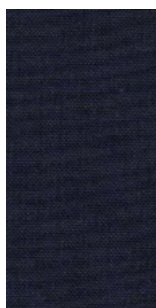
783



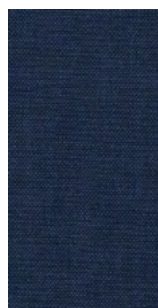
266



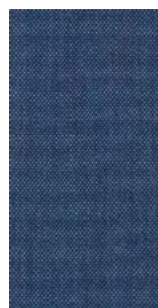
606



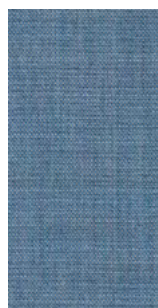
773



866



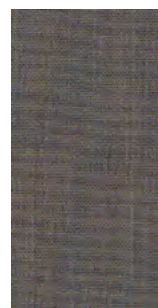
762



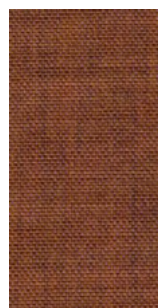
816



823



722



452



443

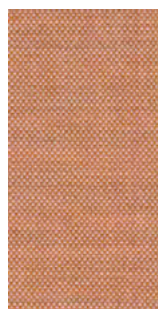
Cat C - Remix 3 KVADRAT



543



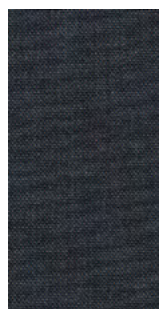
536



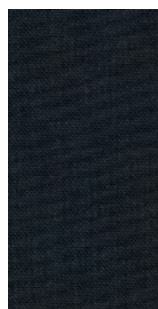
516



852



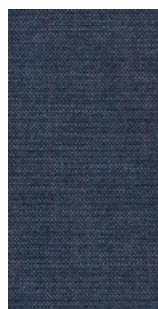
753



873



716



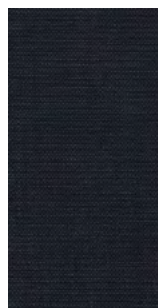
836



733



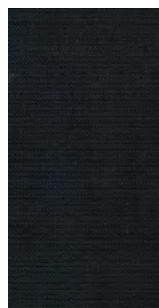
743



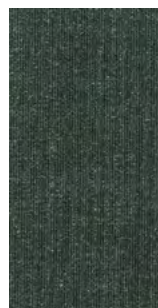
796



906



996



973



982



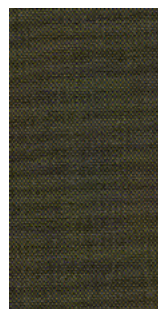
933



923



912



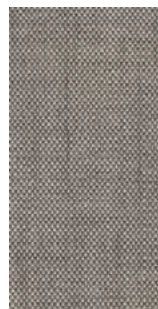
842



962



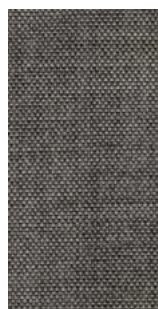
954



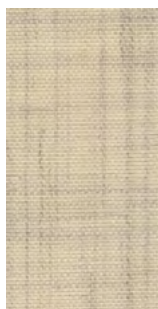
126



136



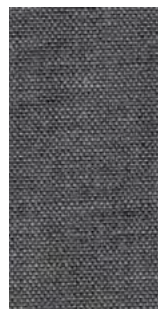
133



113



123



143



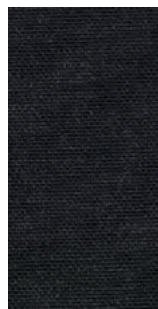
152



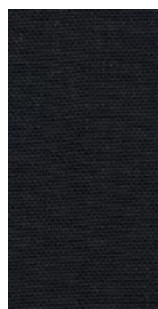
173



163



183



196



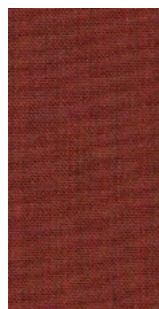
566



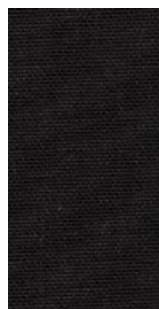
643



632



653



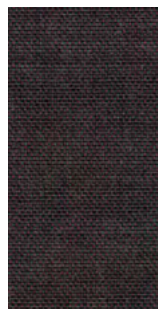
383



662



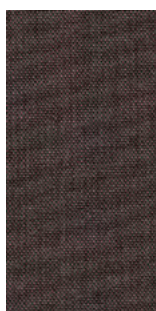
373



362

tessuto / fabric / Stoff / tissu / tejido

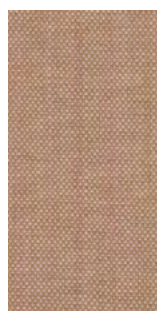
Cat C - Remix 3 KVADRAT



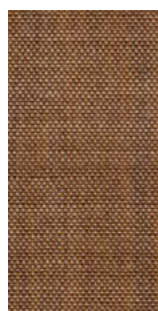
672



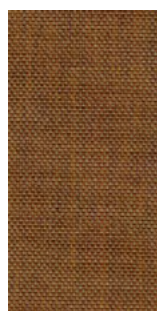
612



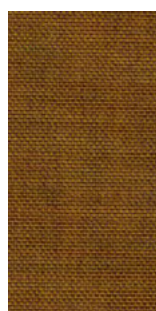
406



252



433



422



412



942

tessuto / fabric / Stoff / tissu / tejido

Cat C - Tonica 2 KVADRAT

Design

Georgina Wright

Application

Offices, hotels,
institutions, domestic use.

Description

Composition:

100% new wool

Yarn type: Stapel

Binding: Plain

Width: 140 cm

Weight: app. 700 g/lin.m

Tests

Abrasion

App. 45.000 Martindale rubs,
EN ISO 12947

Pilling

Note 4-5, EN ISO 12945

Light fastness

Note 5-7, ISO 105-B02

Flame resistance

EN 1021-1/2

BS 5852, ignition source 2-4

DIN 4102 B2

Önorm B1/Q1

UNI 9175/UNI 9176, 1IM

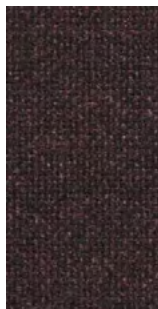
Cal. Tech. Bull. 117, Sec. E

IMO A.652(16)

Care

Vacuuming and dry cleaning

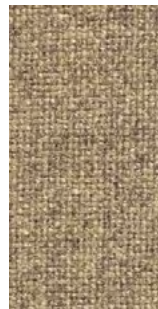
Samples are purely indicative because of natural inconsistencies that occur in the raw materials. As a result there may be small differences in the product delivered.



693



383



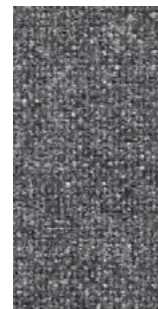
353



223



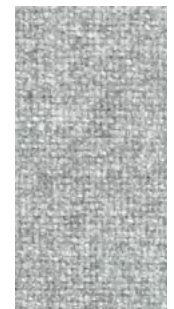
192



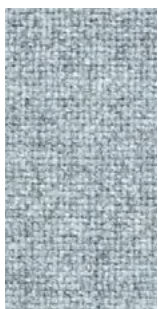
132



182



171



123



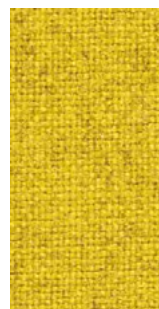
111



233



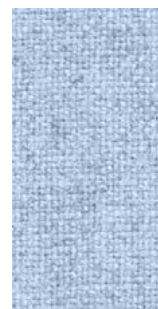
411



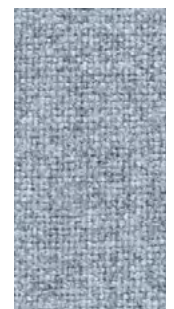
443



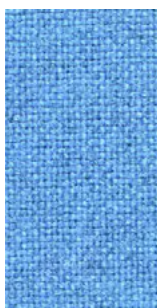
813



713



723



733



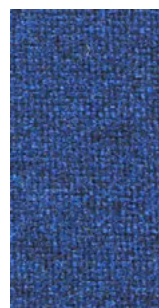
743



763



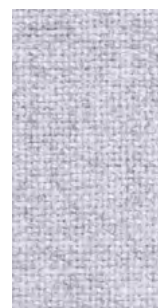
773



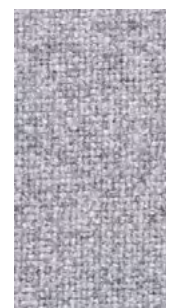
732



672

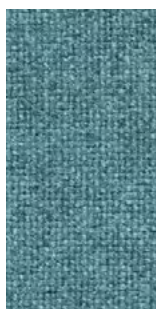


623



633

Cat C - Tonica 2 KVADRAT



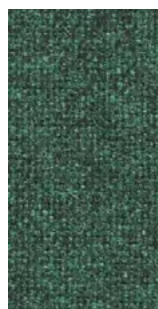
831



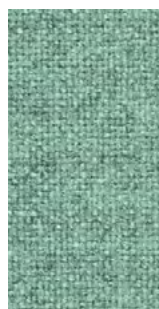
832



873



962



933



923



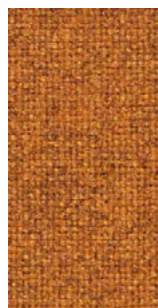
613



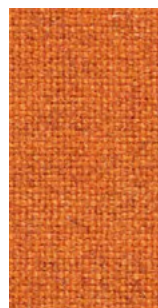
523



533



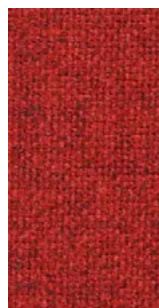
511



543



531



611



643



612



Cat C - Lapalma Smart

Application

Contract and domestic use

Description

Composition:
100% SOLUTION DYED ACRILIC
Width: 140cm
Weight Gr./mtl.: 700

Tests

Shrinkage after dry cleaning
Warp: -1 % Weft: -1 %

Shrinkage after washing
Warp: -3 % Weft: -3 %

Resistance to PILLING
after 2000 cycles
Note 4 EN ISO 12945-2

Abrasion
20000 Cicli EN ISO 12947-2

Light fastness
Note 7/8 EN ISO105B02

Color fastness to washing
Note 5 EN ISO105C06

Color fastness to dry Cleaning
Note 5 EN ISO105D01

Color fastness
to crocking Test WET
Note 4/5 EN ISO105X12

Color fastness
to crocking Test DRY
Note 5 EN ISO105X12

Care

Cleaning: Vacuuming
Mount in moist condition.
Mildew growth is not promoted
by the textile but mildew may
grow on dirt and other foreign
substances if not removed.
Keep the textile dry to avoid
mildew spores to stick.

Samples are purely indicative because of natural inconsistencies that occur in the raw materials. As a result there may be small differences in the product delivered.



tessuto / fabric / Stoff / tissu / tejido

Cat D - Divina MD KVADRAT

Design

Finn Skodt

Application

Offices, hotels,
institutions, domestic use.

Description

Composition:
100% new wool
Yarn type: Stapel
Binding: 4-end broken twill
Width: 150 cm
Weight: app. 820 g/lin.m

Tests

Abrasion
App. 45.000 Martindale rubs,
EN ISO 12947

Pilling
Note 3, EN ISO 12945

Light fastness
Note 5-7, ISO 105-B02

Flame resistance
EN 1021-1/2
BS 5852, ignition source 2-5
DIN 4102 B2
Onorm B1/Q1
NF D 60 013
UNI 9175 1IM
US Cal. Tech. Bull. 117
AS.NZS 1530.3
IMO A.652(16)

Care

Dry clean or clean with foam
detergents.

Samples are purely indicative because of natural inconsistencies that occur in the raw materials. As a result there may be small differences in the product delivered.



0575/13



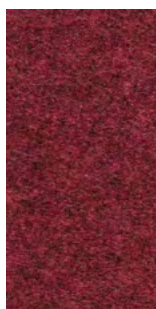
Flame Resistant



193 353 343 363 453 213 413 203
913 943 973 873 843 813 293 783
713 733 743 753 773 683 673 653

tessuto / fabric / Stoff / tissu / tejido

Cat D - Divina MD KVADRAT



633



613



433

tessuto / fabric / Stoff / tissu / tejido

Cat D - Divina Melange 3 KVADRAT

Design

Finn Sködt

Application

Offices, hotels, institutions, domestic use.

Description

Composition:

100% New wool

Yarn type: Stapel

Binding: 4-end broken twill

Width: 150 cm

Weight: app. 820 g/lin.m

Tests

Abrasion
App. 45.000 Martindale rubs
EN ISO 12947

Pilling
Note 3, EN ISO 12945

Light fastness
Note 7, ISO 105-B02

Flame resistance
EN 1021-1/2
BS 5852, ignition source 2-5 DIN 4102 B2
Önorm B1/Q1
UNI 9175/UNI 9176, 11M
US Cal. Tech. Bull. 117
IMO A.652(16)

Care

Dry clean or clean with foam detergents.

Samples are purely indicative because of natural inconsistencies that occur in the raw materials. As a result there may be small differences in the product delivered.



0575/13



Flame Resistant



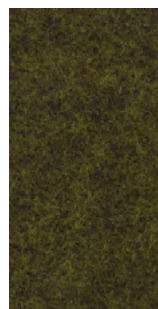
WOOLS OF NEW ZEALAND



427



457



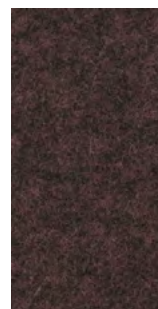
471



467



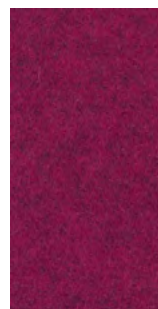
617



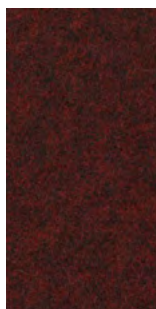
677



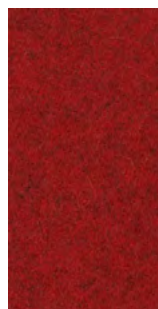
581



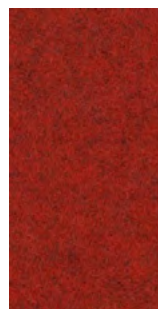
620



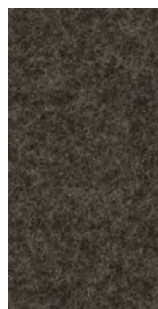
597



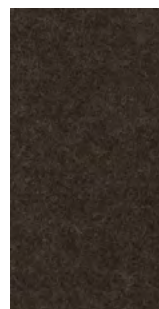
567



557



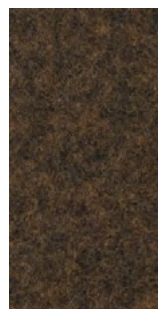
277



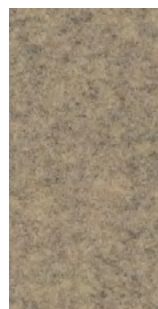
280



260



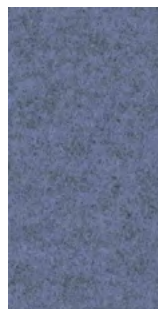
367



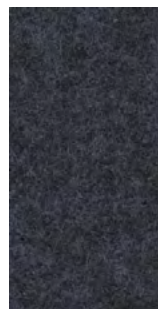
237



227



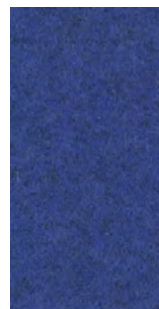
647



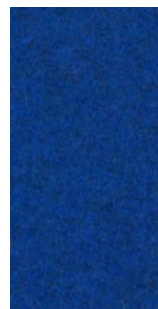
687



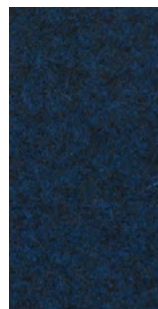
787



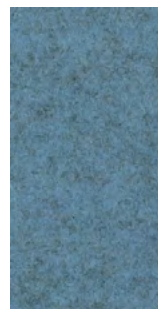
747



757



777

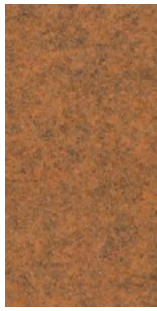


731

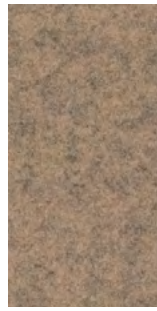
Cat D - Divina Melange 3 KVADRAT



547



527



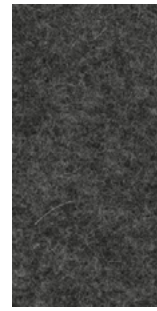
517



571



180



170



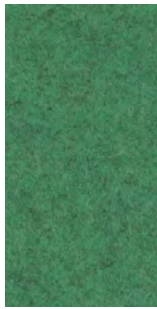
147



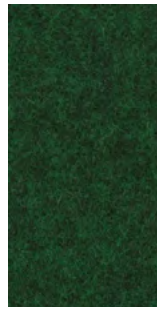
120



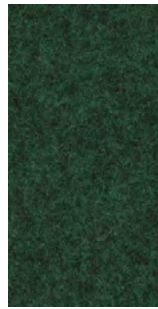
917



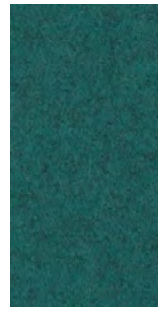
937



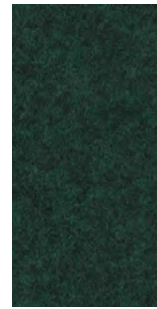
977



967



821



871

tessuto / fabric / Stoff / tissu / tejido

Cat D - Steelcut 2 KVADRAT

Design

Frans Dijkmeijer
Giulio Ridolfo

Width: 140 cm

Weight: app. 825 g/lin.m

Flame resistance

EN 1021-1/2
BS 5852, ignition source 2
DIN 4102 B2
Onorm B1/Q1
Italian Class 1IM
US Cal. Tech. Bull. 117
IMO A.652(16)

Application

Offices, hotels,
institutions, domestic use.
Great durability

Tests

Abrasion
App. 100.000 Martindale rubs,
EN ISO 12947

Pilling
Note 3-4, EN ISO 12945

Care

Vacuuming and dry cleaning.

Description

Composition:
90% new wool, 10% nylon
Yarn type: Stapel, worsted
Binding: Semi-plain

Light fastness
Note 5-7, ISO 105-B02

Samples are purely indicative because of natural inconsistencies that occur in the raw materials. As a result there may be small differences in the product delivered.

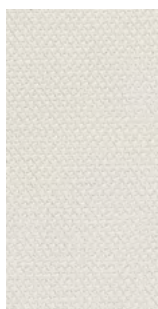


435 445 240 255 365 135 370 625
685 190 180 155 120 820 835 775
760 780 975 985 950 935 265 160

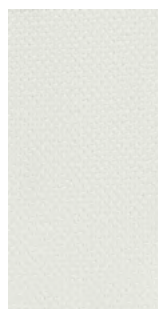
Cat D - Steelcut 2 KVADRAT



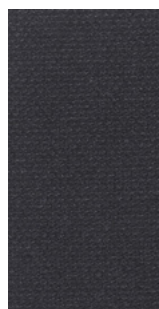
140



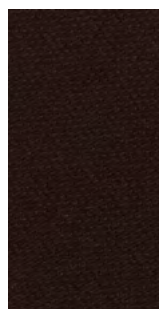
220



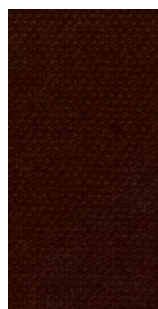
110



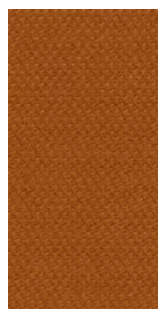
380



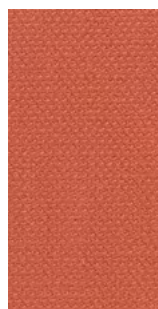
695



655



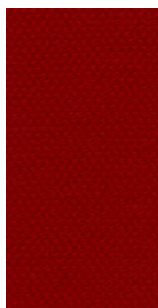
535



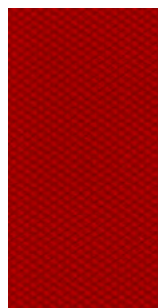
550



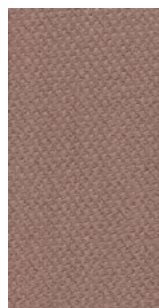
660



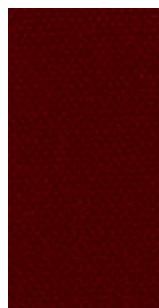
635



545



605



615

tessuto / fabric / Stoff / tissu / tejido

Cat D - Steelcut Trio 3 KVADRAT

Design

Frans Dijkmeijer
Giulio Ridolfo

Width: 140 cm

Weight: app. 770 g/lin.m

Flame resistance

EN 1021-1/2

BS 5852, ignition source 2

DIN 4102 B2

Onorm B1/Q1

Italian Class 1IM

US Cal. Tech. Bull. 117

IMO A.652(16)

Application

Offices, hotels,
institutions, domestic use.
Great durability

Tests

Abrasion

App. 100.000 Martindale rubs,

EN ISO 12947

Pilling

Note 3-4, EN ISO 12945

Care

Vacuuming and dry cleaning.

Description

Composition:

90% new wool, 10% nylon

Yarn type: Stapel, worsted

Binding: Semi-plain

Light fastness

Note 5-7, ISO 105-B02

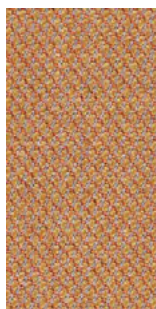
Samples are purely indicative because of natural inconsistencies that occur in the raw materials. As a result there may be small differences in the product delivered.



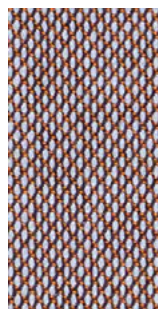
0575/13



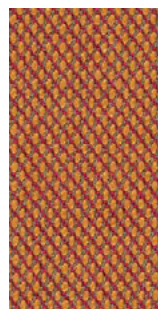
WOOL OF NEW ZEALAND



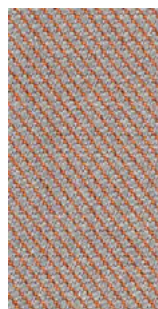
436



416



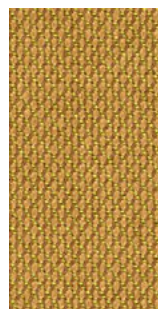
576



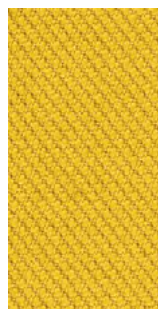
426



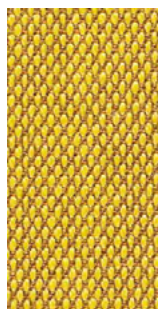
476



466



446



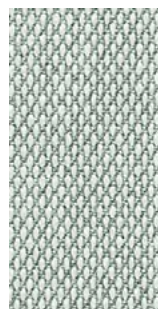
453



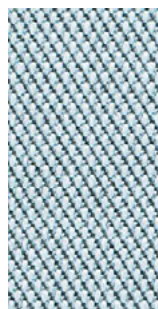
236



105



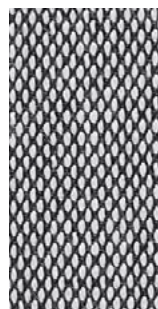
113



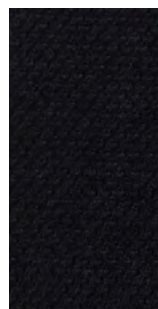
713



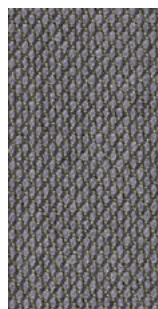
153



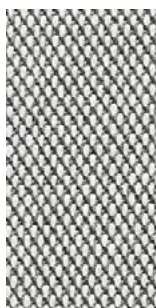
124



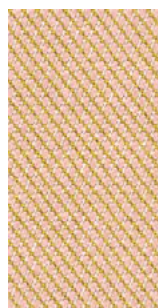
195



176



133



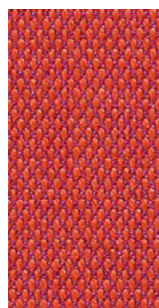
506



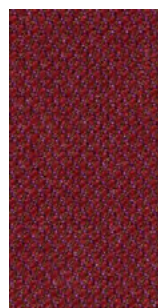
616



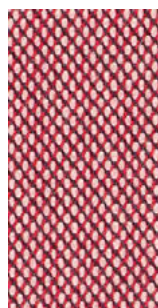
645



553



686

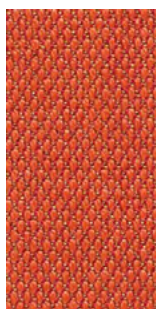


636

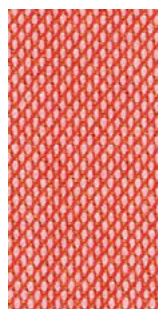


666

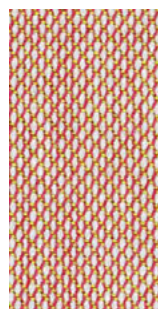
Cat D - Steelcut Trio 3 KVADRAT



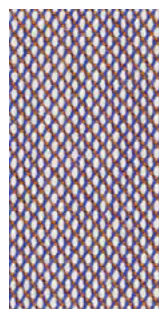
533



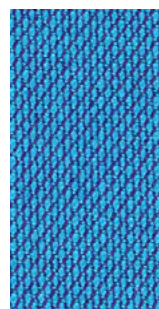
526



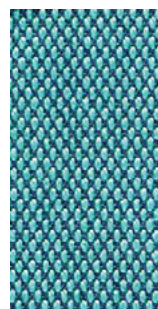
515



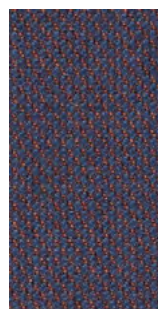
806



865



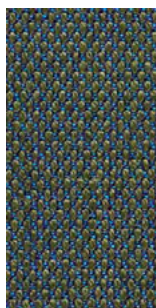
983



776



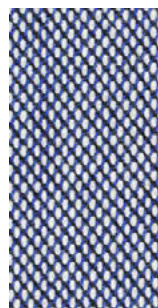
756



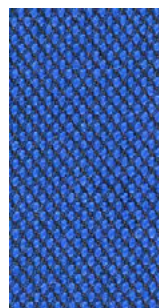
883



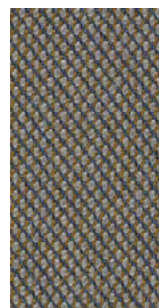
796



716



746



266



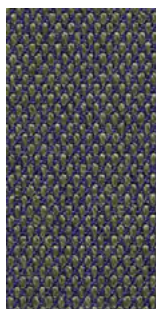
253



205



246



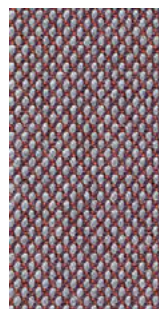
283



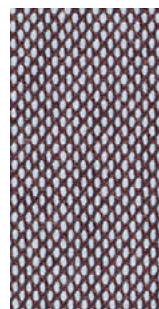
376



383



276



336



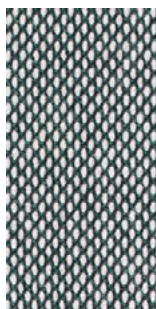
226



213



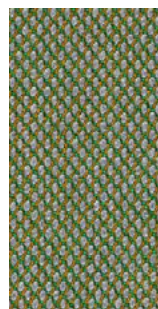
996



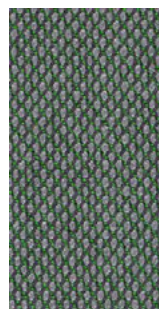
916



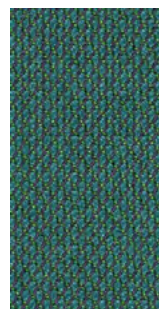
906



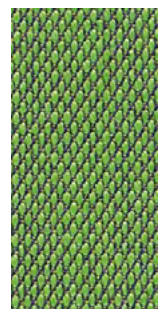
946



966



976



953

tessuto / fabric / Stoff / tissu / tejido

Cat E - Uniform Melange KVADRAT (Fabric to upholster SCREEN tubes only)

Design

Febrik

Application

Contract and domestic use.

Description

Composition:
68% new wool, 22% viscose
10% polyester 2mm foam
Width: 165 cm
Weight: app. 870 g/lin.m

Tests

Abrasion
App. 100.000 Martindale rubs,
EN ISO 12947

Pilling
Note 4, EN ISO 12945

Light fastness
6, ISO 105-B02

Flame resistance
EN 1021-1/2
BS 5852,part 1
DIN 4102 B2
Onorm B1/Q1
UNI 9175/UNI 9176, 11M
US Cal. Tech. Bull. 117.2013
IMO FTP code 2010:part 8

Care

Dry clean or clean with foam
detergents.

Samples are purely indicative because of natural inconsistencies that occur in the raw materials. As a result there may be small differences in the product delivered.



Cat E - Uniform Melange KVADRAT



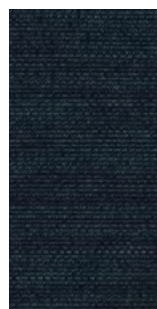
813



963



833



883



983



993



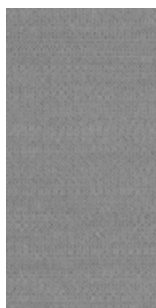
453



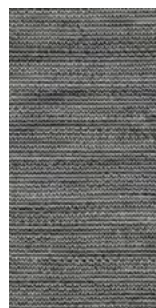
933



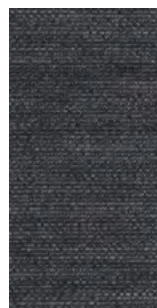
913



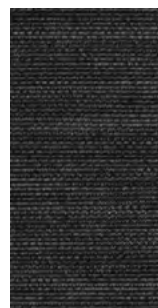
123



133



163



183



193

lapalma

via majorana 26
35010 cadoneghe (PD), italy
t.: +39 049 702788
info@lapalma.it
www.lapalma.it