

# FABRIC

TESSUTO

We select fabrics that adorn the Lapalma collection by applying the criteria of softness, quality and resistance. With their yarns and textures, they offer Italian style that crosses boundaries, leading to emotions in all environments where they are included. To guarantee high performance, we select fabrics with abrasion resistance starting from >50,000 Martindale (many exceed even 100,000 cycles), fire-resistance and light resistance.

## **Fabric categories**

The fabrics are classified according to separate categories of price bands. The range of materials used includes 100% polyester Trevira, mixed wool, technical yarns such as polyamide, as well as 100% virgin wool. The range also includes Iris fabric made of 100% recycled PET.

## **Customer fabric**

Thanks to our tailoring skills, we can provide a customised service. We can upholster the products you choose with customer fabric. You just need to send us an A4 size sample so we can verify feasibility. If accepted, we will ask for a length of fabric in order to make a trial upholstered element. A surcharge will be made for patterned fabrics.



# SOFT-LEATHER/LEATHER

PELLE/CUOIO

## **Soft - leather**

Featuring softness and elasticity, all the leather chosen by Lapalma is of European origin, chrome-tanned, pigmented, corrected top-grain and aniline top-grain. It has excellent colourfastness and complies with the main fire-resistance tests such as CigaretteTest EN1021.

## **Leather**

The hide upholstery of our furniture has an impressive thickness of 2 - 2.5mm. This natural pigmented material is resistant to rubbing and has excellent lightfastness.



tessuto / fabric / Stoff / tissu / tejido

Cat A - Jet FIDIVI

**Application**

Contract and domestic use.

**Description**

Composition:  
100% Polyester - Trevira CS®  
Width: 140 cm  
Weight: 260 g/m2

**Tests**

Abrasion  
UNI EN ISO 12947-2 65000 ± 10% rubs  
  
Pilling  
UNI EN ISO 12945-2 5 (Standard picture)  
Tolerance: from 4 to 5  
  
Colour fastness  
to rubbing UNI EN ISO 105-X12  
(4/5 grey scale)  
Tolerance: from 4 to 5  
to light UNI EN ISO 105-B02 6 (Blue scale)  
Tolerance: from 5 to 8

**Flame resistance**

C1  
B1  
M1  
CRIB 5  
EN 1021/1-2  
IMO Res. A 652 (16) Part 8  
IMO Res. A 471 (XII) Part 7  
NF D 60013 Class AM 18

**Care**

Dry clean or clean with foam detergents.

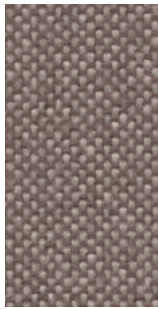
Samples are purely indicative because of natural inconsistencies that occur in the raw materials. As a result there may be small differences in the product delivered.



Cat A - Jet FIDIVI



2024



9109



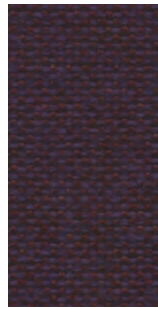
9108



2012



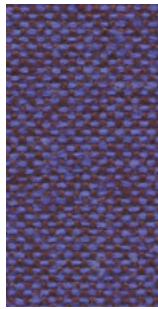
2010



9607



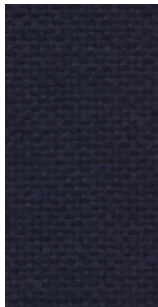
9605



9606



9604



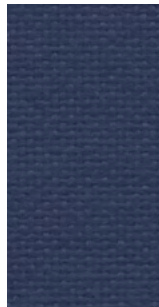
6098



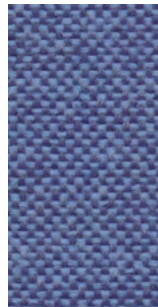
9603



9602



6013



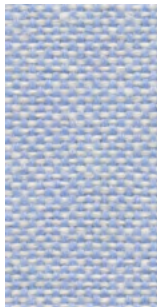
9601



6095



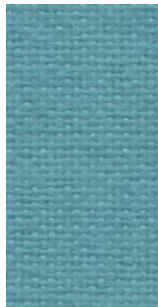
6056



9600



9610



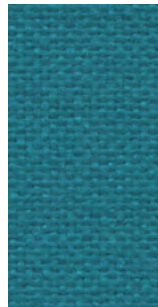
6007



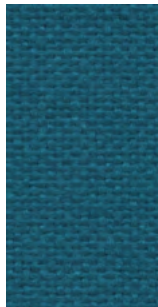
9609



9608



6091



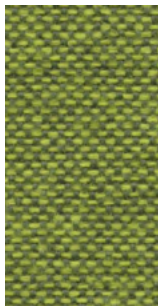
6014



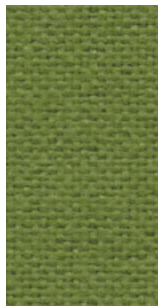
9701



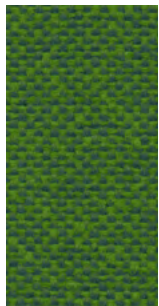
7041



9702



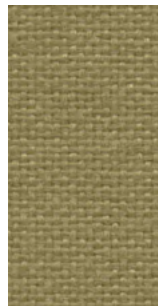
7025



9704



7014



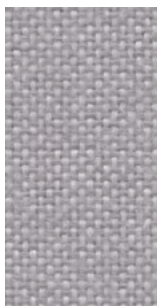
7034



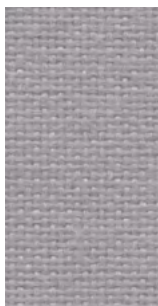
9703



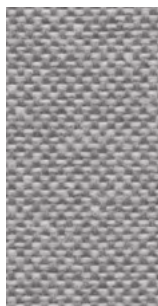
8001



9803



8078



9804



9805



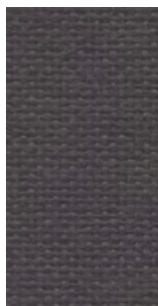
8009



9294



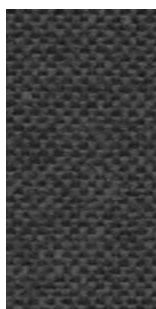
9281



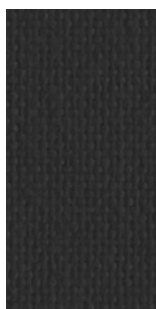
8017

tessuto / fabric / Stoff / tissu / tejido

Cat A - Jet FIDIVI



9806



8033

tessuto / fabric / Stoff / tissu / tejido

Cat A - Maya FIDIVI

**Application**

Contract and domestic use.

**Description**

Composition:  
100% Polyester - Trevira CS®

Width: 140 cm

Weight: 420 g/m2

**Tests**

Abrasion  
UNI EN ISO 12947-2 100000 ± 10% rubs

Pilling  
UNI EN ISO 12945-2 5 (Standard picture)  
Tolerance: from 4 to 5

Colour fastness  
to rubbing UNI EN ISO 105-X12  
(4/5 grey scale)  
Tolerance: from 4 to 5  
to light UNI EN ISO 105-B02 6 (Blue scale)  
Tolerance: from 5 to 8

Flame resistance

C1  
B1  
M1  
CRIB 5  
EN 1021/1-2  
IMO Res. A 652 (16) Part 8  
IMO Res. A 471 (XII) Part 7  
BS 7176 Medium Hazard  
NF D 60013 Class AM 18

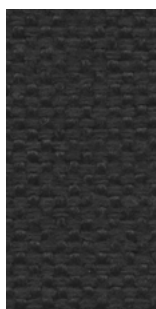
**Care**

Dry clean or clean with foam detergents.

Samples are purely indicative because of natural inconsistencies that occur in the raw materials. As a result there may be small differences in the product delivered.



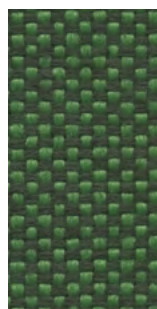
Cat A - Maya FIDIVI



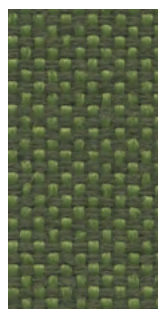
9805



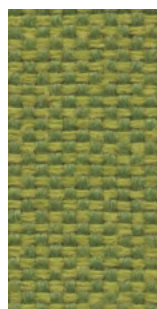
7020



9704



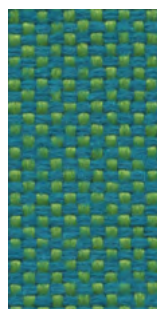
9703



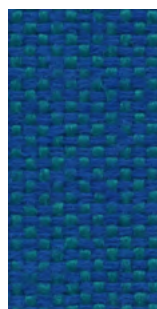
9702



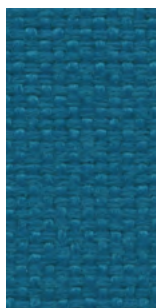
7009



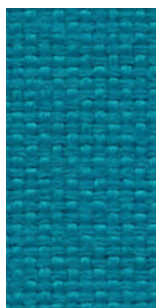
9705



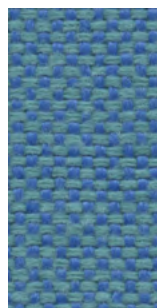
9602



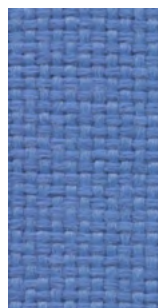
6014



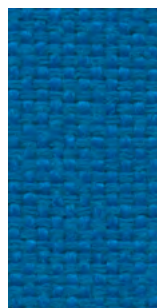
6091



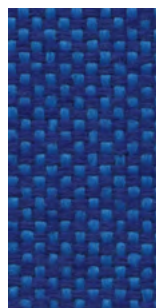
9601



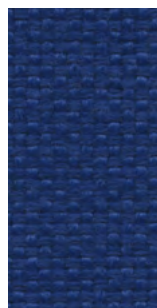
6006



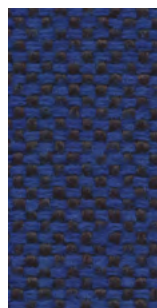
6075



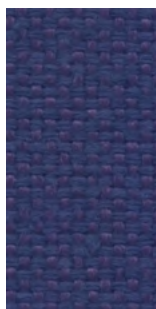
9603



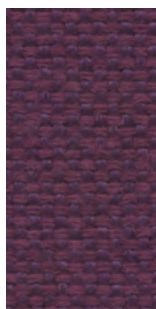
6080



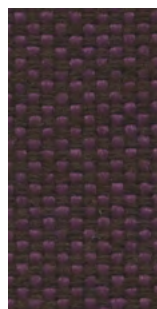
9604



9501



9503



9502

tessuto / fabric / Stoff / tissu / tejido

Cat A - Medley GABRIEL

Design

Mette Krebs Petersen

Application

Offices, hotels,  
institutions, domestic use.

Description

Composition:

100% Polyester

Width: 140 cm

Weight: app. 510 g/lin.m

Tests

Abrasion  
App. 75.000 Martindale rubs  
EN ISO 12947-2

Pilling  
Note 4, EN ISO 12945-2

Light fastness  
Note 5-7, ISO 105-B02

Flame resistance  
BS EN 1021 1&2  
BS 5852 Part 1 0,1 Cigarette & match  
California Bulletin CAL 117-E-Class 1  
Class Uno UNI 9175 Class 1 | EMME  
CA TB 117-2013  
ÖNORM B 3825-B2-3800-Q1 UK

Care

Dry clean or clean with foam  
detergents.

Samples are purely indicative because of  
natural inconsistencies that occur in the  
raw materials. As a result there may be  
small differences in the product delivered.



66008



60999



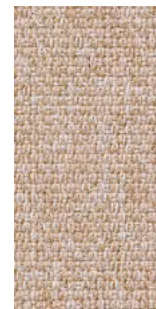
60167



60004



60003



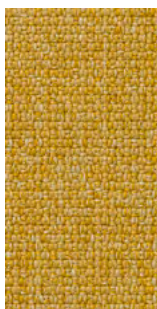
61189



61002



61003



62054



67002



61004



68005



68002



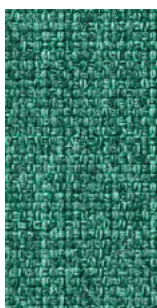
62002



68114



68115



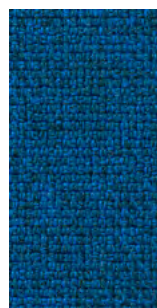
67054



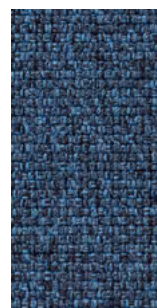
67053



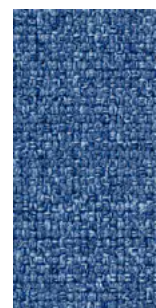
67006



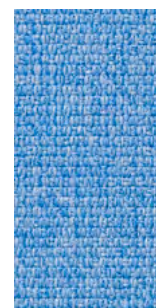
66007



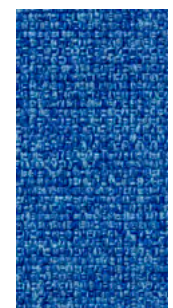
66010



66144



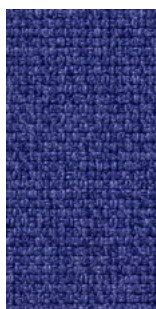
67052



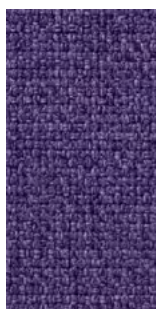
66009



Cat A - Medley GABRIEL



66145



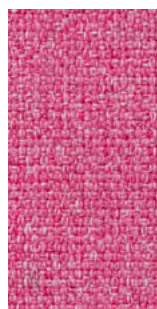
65086



65012



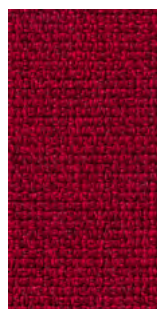
65011



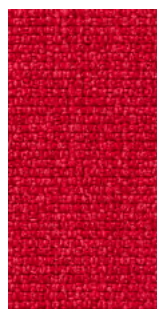
64124



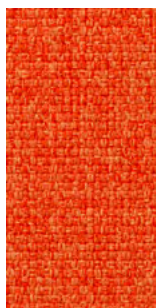
64125



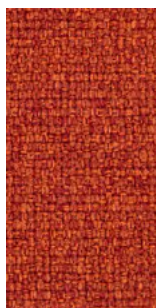
64123



64019



63013



63017



63016



63063



63064

tessuto / fabric / Stoff / tissu / tejido

Cat B - Capture GABRIEL

**Application**

Contract and domestic use.

**Description**

Composition:  
85% new Zealand wool, 15% polyamide  
Width: 140 cm  
Weight: app. 475 g/lin.m

**Tests**

Abrasion  
App. 200.000 Martindale rubs  
EN ISO 12947  
  
Pilling  
Note 4-5, EN ISO 12945  
  
Light fastness  
Note 5-7, ISO 105-B02  
  
Flame resistance  
EN 1021 1/2  
BS 5852 Part 1  
BS 5852, part 5 (with treatment)  
DIN 4102 B2  
UNI 9175/UNI 9176, 1 I-M  
US Cal. Tech. Bull. 117.2013

**Care**

Dry clean or clean with foam  
detergents.

Samples are purely indicative because of natural inconsistencies that occur in the raw materials. As a result there may be small differences in the product delivered.



Cat B - Capture GABRIEL



6901



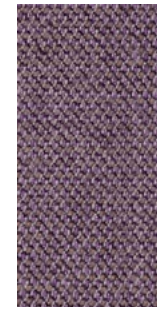
4801



6701



6302



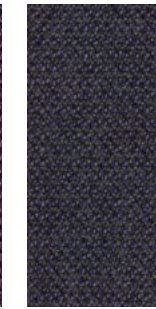
6202



4501



7001



5201



4901



4902



6602



6001



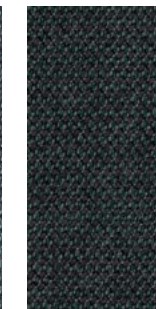
5002



5001



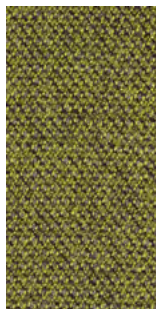
6601



7101



5101



5301



6501

tessuto / fabric / Stoff / tissu / tejido

Cat B - Crisp GABRIEL

**Application**

Contract and domestic use.

**Description**

Composition:  
93% new Zealand wool, 7% polyamide  
Width: 140 cm  
Weight: app. 460 g/lin.m

**Tests**

Abrasion  
App. 200.000 Martindale rubs  
EN ISO 12947-2  
  
Pilling  
Note 4-5, EN ISO 12945-2  
  
Light fastness  
Note 5-7, ISO 105-B02  
  
Flame resistance  
EN 1021 1/2  
BS 5852 Part 1 0,1  
UNI 9175 1 I-M  
US Cal. Tech. Bull. 117.2013  
IMO MSC 307(88)

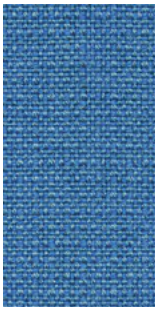
**Care**

Dry clean or clean with foam  
detergents.

Samples are purely indicative because of natural inconsistencies that occur in the raw materials. As a result there may be small differences in the product delivered.



Cat B - Crisp GABRIEL



4601



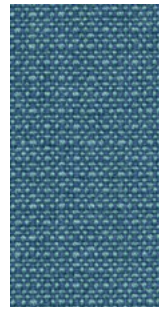
4122



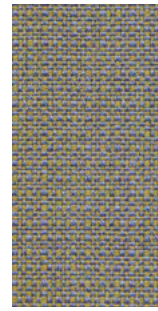
4741



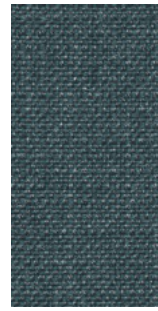
4751



4602



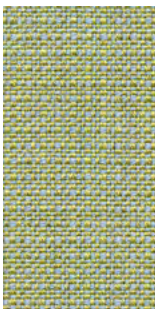
4603



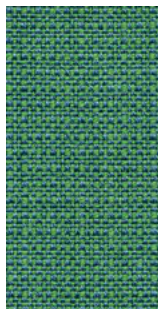
4723



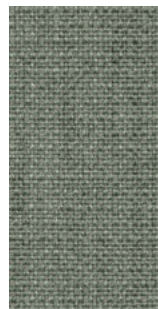
4731



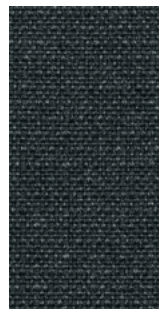
4201



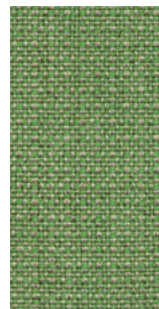
4605



4752



4761



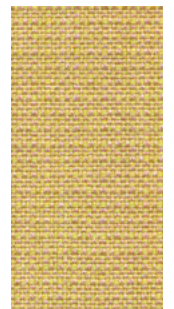
4117



4203



4211



4771



Cat B - Nattè SUNBRELLA

**Application**

Contract and domestic use.

**Description**

Composition:  
100% Sunbrella® Acrylic  
Width: 140 cm  
Weight: app. 385 g/lin.m

**Tests**

Water-Repellent  
Spray test ISO 4920 class 5  
Colour fastness  
UV indoor ISO105B02 class 8  
Weather outdoor ISO105B04 1000H  
Class 4-5  
Dry friction ISO105X12 Class 5

**Care**

Dry clean or clean with foam  
detergents.

Samples are purely indicative because of natural inconsistencies that occur in the raw materials. As a result there may be small differences in the product delivered.





Cat B - Iris RADA

**Application**

Contract and domestic use.

**Description**

Composition:  
100% PET RECYCLED  
(made with recycled plastic bottles)  
Width: 140 cm  
Weight: app. 800 g/lin.m

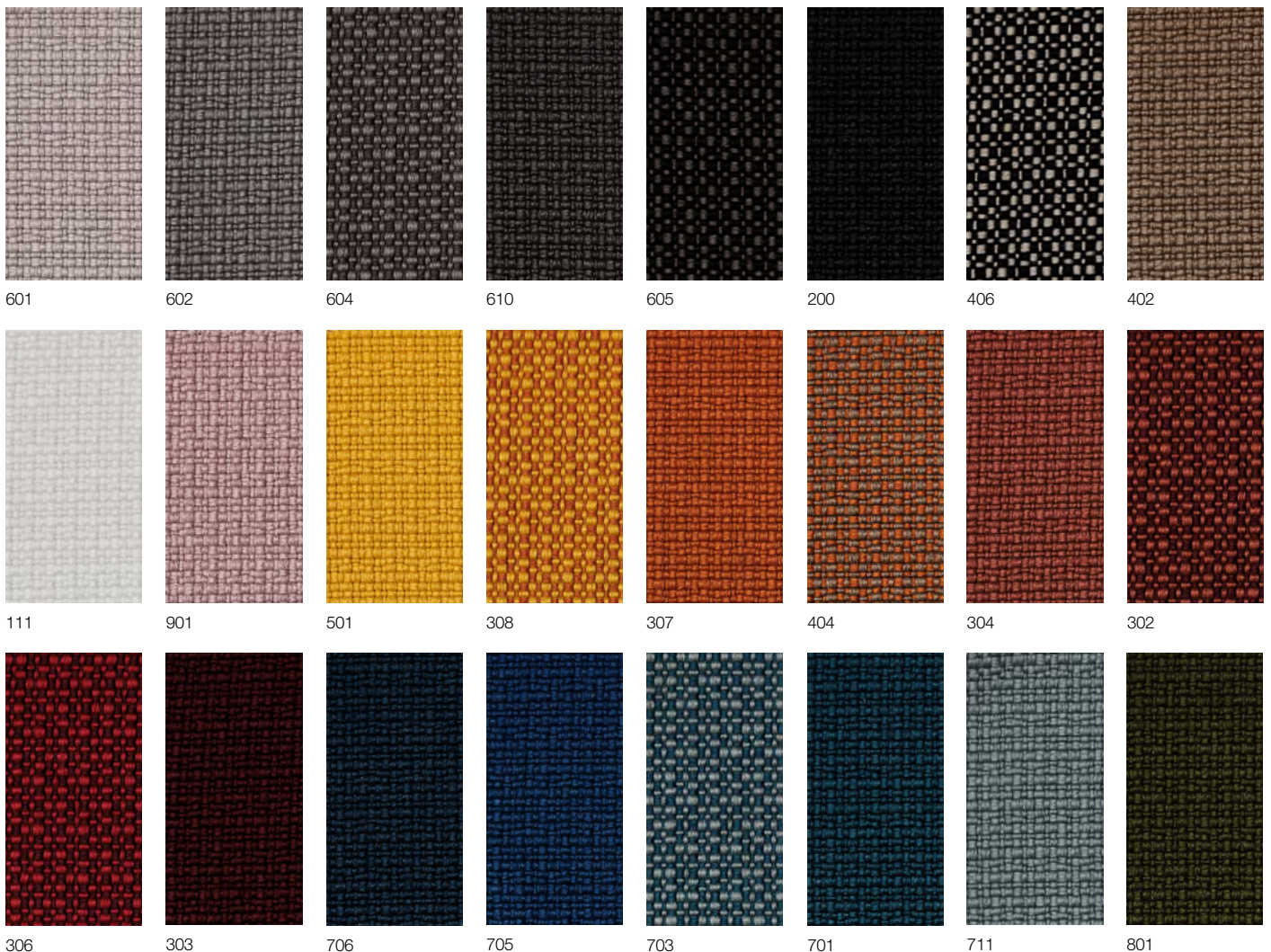
**Tests**

Abrasion  
App. 100.000 Martindale rubs  
EN ISO 12947  
Pilling  
dry 4-5, EN ISO 12945  
wet 4, EN ISO 12945  
Light fastness 7, ISO 105-B02  
Flame resistance  
EN 1021-1/2  
BS 5852, flame  
BS 5852, cigarette test  
IMO FTP-8 Res.A652  
UNI 9175, class 1 I-M  
US Cal. Tech. Bull. 117.2013  
Flame retardants  
According to GB/T 24279-1:2018

**Care**

Dry clean or clean with foam detergents.

Samples are purely indicative because of natural inconsistencies that occur in the raw materials. As a result there may be small differences in the product delivered.



tessuto / fabric / Stoff / tissu / tejido

Cat C - Canvas 2 KVADRAT

**Design**

Giulio Ridolfo

**Application**

Offices, hotels,  
institutions, domestic use.

**Description**

Composition:  
90% new wool, 10% nylon  
Yarn type: Worsted  
Binding: Semi-plain weave  
Width: 140 cm  
Weight: app. 480 g/lin.m

**Tests**

Abrasion  
App. 100.000 Martindale rubs  
EN ISO 12947  
Pilling  
Note 4-5, EN ISO 12945  
Light fastness  
Note 5-7, ISO 105-B02

**Flame resistance**

EN 1021-1/2  
BS 5852 part 1  
BS 5852, ignition source 2-3  
DIN 4102 B2  
Önorm B1/Q1  
NF D 60 013  
UNI 9175, 1IM  
US Cal. Tech. Bull. 117  
IMO A.652(16)

**Care**

Dry clean or clean with foam  
detergents.

Samples are purely indicative because of  
natural inconsistencies that occur in the  
raw materials. As a result there may be  
small differences in the product delivered.

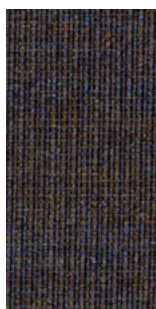




Cat C - Canvas 2 KVADRAT



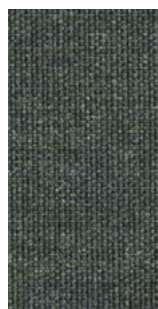
684



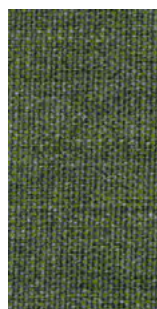
764



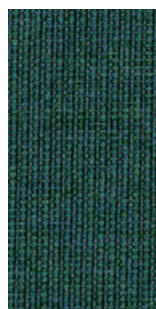
854



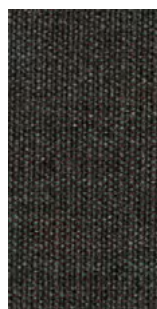
996



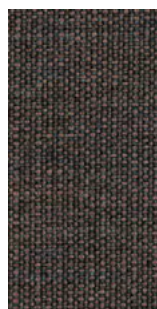
974



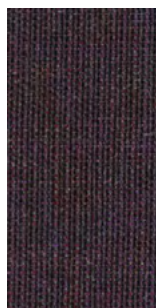
984



364



674



694



654



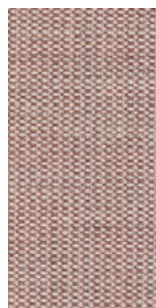
576



644



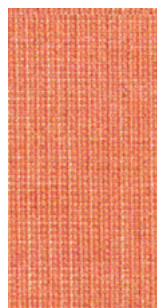
356



614



566



546



556



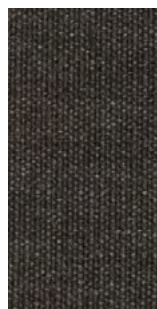
454



254



936



374

tessuto / fabric / Stoff / tissu / tejido

Cat C - Clara 2 KVADRAT

Design

Anne Birgitte Hansen

Application

Offices, hotels,  
institutions, domestic use.

Description

Composition:  
92% new wool worsted, 8% nylon

Yarn type: Staple, worsted

Binding: Semi-plain weave

Width: 138 cm

Weight: app. 400 g/lin.m

Tests

Abrasion  
App. 80.000 Martindale rubs,  
EN ISO 12947

Pilling  
Note 4, EN ISO 12945

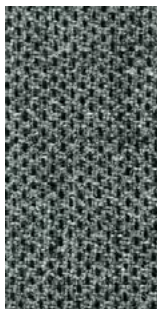
Light fastness  
Note 5-7, ISO 105-B02

Flame resistance  
EN 1021-1/2  
BS 5852, ignition source 2-3  
DIN 4102 B2  
NF D 60 013  
UNI 9175 11M  
US Cal. Tech. Bull. 117, Sec. E  
NFPA 260  
IMO A.652(16)

Care

Vacuuming and dry cleaning.

Samples are purely indicative because of natural inconsistencies that occur in the raw materials. As a result there may be small differences in the product delivered.



384



388



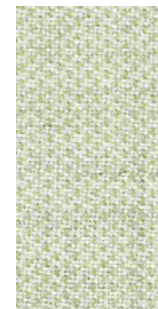
277



273



248



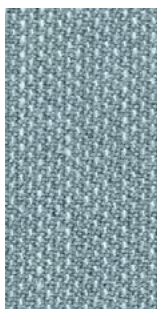
244



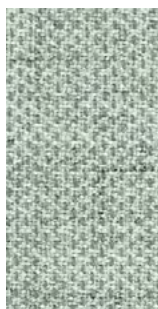
188



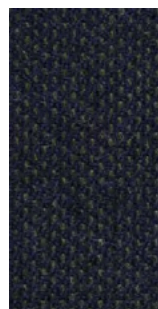
184



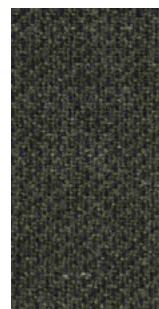
148



144



797



793



937



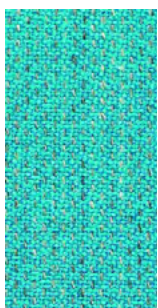
933



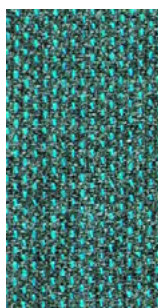
983



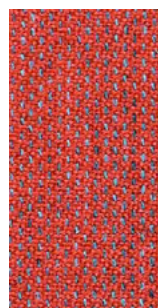
987



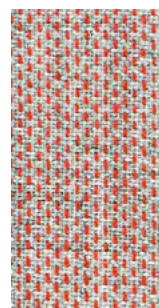
888



884



548



544



647



643



427



423

tessuto / fabric / Stoff / tissu / tejido

Cat C - Fiord 2 KVADRAT

**Design**

Louise Sigvardt & Tone Barnung

**Application**

Offices, hotels, institutions, domestic use.

**Description**

Composition:  
92% new wool, 8% nylon  
Yarn type: Worsted  
Binding: Dobby  
Width: App. 140 cm (app. 55 inches)  
Weight: App. 500 g/lin.m

**Tests**

Abrasion  
App. 60.000 Martindale rubs  
EN ISO 12947

Pilling  
Note 4-5, EN ISO 12945

Light fastness  
Note 5-7, ISO 105-B02

Flame resistance  
EN 1021-1/2  
BS 5852 part 1  
DIN 4102 B2  
NF D 60 013  
UNI 9175 1IM  
US Cal. Bull. 117-2013  
IMO FTP Code 2010:Part 8  
With flame retardant treatment:  
BS 5852 Crib 5

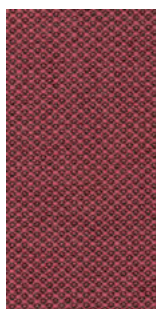
**Care**

Vacuuming and dry cleaning

**Samples are purely indicative because of natural inconsistencies that occur in the raw materials. As a result there may be small differences in the product delivered.**



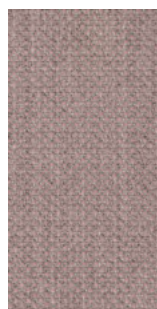
Cat C - Fiord 2 KVADRAT



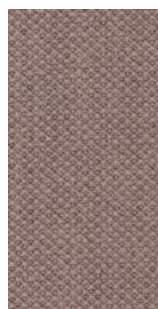
662



642



521



551



581



571



562



672



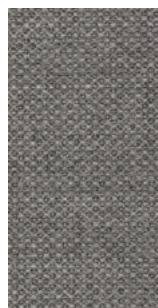
201



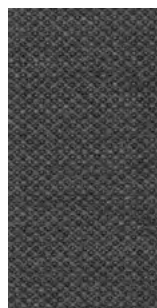
101



251



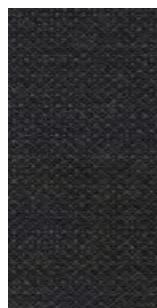
151



171



121



191

tessuto / fabric / Stoff / tissu / tejido

Cat C - Hallingdal 65 KVADRAT

**Design**

Nanna Ditzel

**Application**

Offices, hotels,  
institutions, domestic use.  
Great durability

**Description**

Composition:  
70% new wool, 30% viscose

Yarn type: Stapel

Binding: Plain

Width: 130 cm

Weight: app. 795 g/lin.m

Samples are purely indicative because of natural inconsistencies that occur in the raw materials. As a result there may be small differences in the product delivered.

**Tests**

Abrasion  
App. 100.000 Martindale rubs  
EN ISO 12947

Pilling  
Note 3, EN ISO 12945

Light fastness  
Note 5-7, ISO 105-B02

Flame resistance  
EN 1021-1/2  
BS 5852, ignition source 2-5  
DIN 4102 B2  
Onorm B1/Q1  
UNI 9175/UNI 9176, 1IM  
US Cal. Tech. Bull. 117  
IMO A.652(16)

**Care**

Dry clean or clean with foam  
detergents.



0575/13



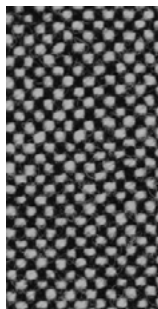
Flame Resistant



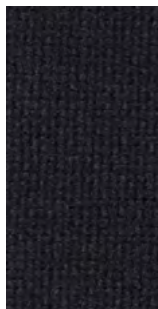
WOOL OF NEW ZEALAND



EU Ecolabel  
www.ecolabel.eu  
EN13033



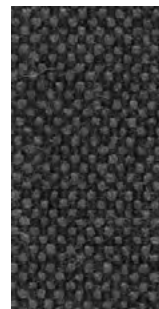
166



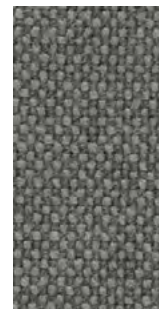
190



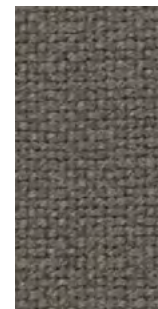
180



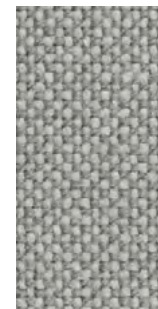
173



153



143



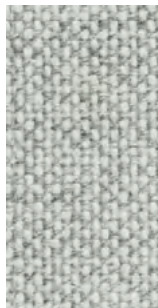
123



113



103



110



907



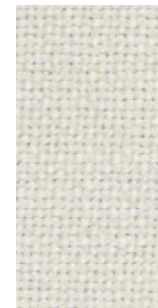
420



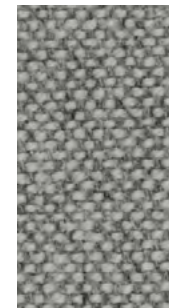
457



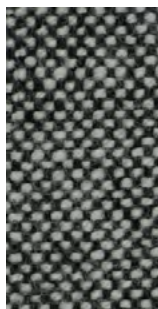
407



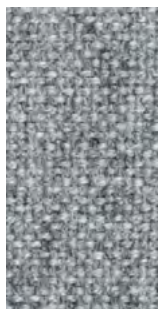
100



116



126



130



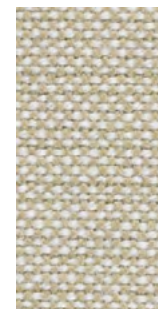
227



224



220



200



270

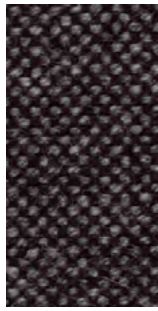


350

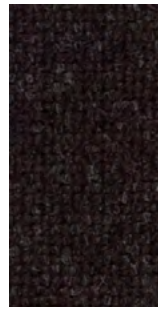
Cat C - Hallingdal 65 KVADRAT



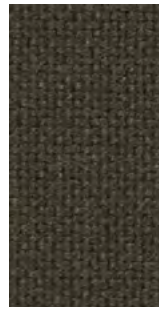
370



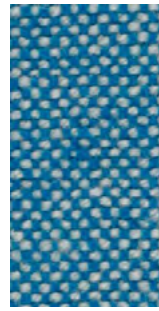
368



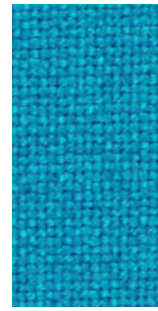
376



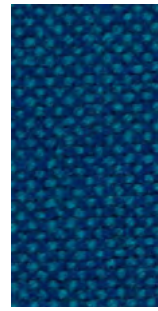
390



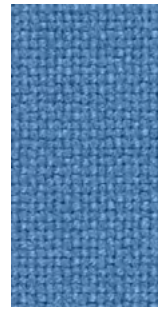
840



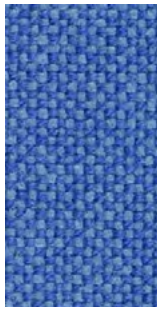
850



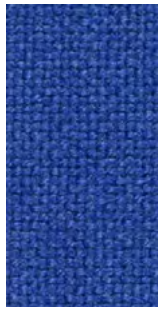
810



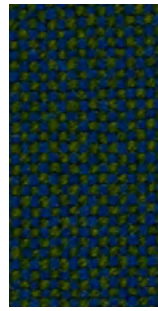
723



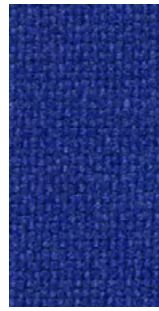
733



750



890



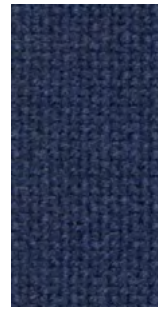
753



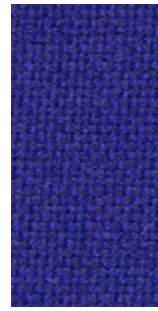
754



773



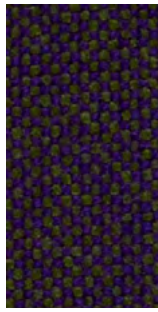
764



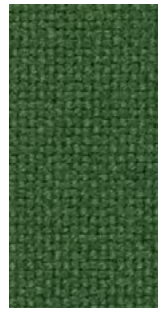
763



702



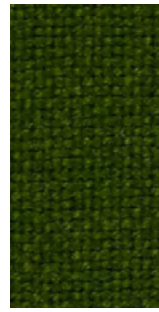
968



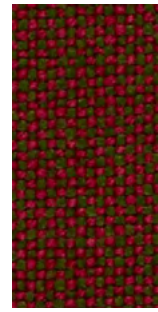
944



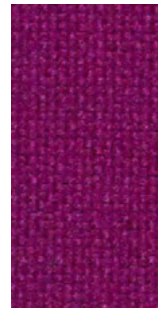
980



960



660



563



573



694



687



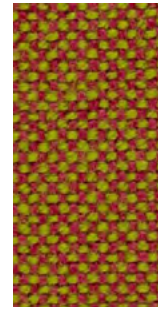
657



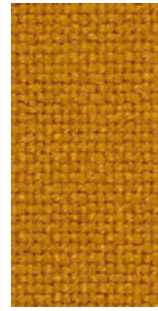
674



680



526



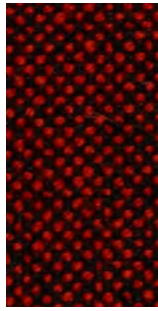
547



590



600



596

tessuto / fabric / Stoff / tissu / tejido

Cat C - Remix 3 KVADRAT

**Design**

Giulio Ridolfo

**Application**

Offices, hotels,  
institutions, domestic use.  
Great durability

**Description**

Composition:  
90% new wool, 10% nylon  
Yarn type: Stapel, worsted  
Binding: Plain weave  
Width: 140 cm  
Weight: app. 460 g/lin.m

**Samples are purely indicative because of natural inconsistencies that occur in the raw materials. As a result there may be small differences in the product delivered.**

**Tests**

Abrasion  
App. 100.000 Martindale rubs,  
EN ISO 12947

Pilling  
Note 3-4, EN ISO 12945

Light fastness  
Note 5-7, ISO 105-B02

Flame resistance  
EN 1021-1/2  
BS 5852, ignition source 2-3  
Onorm B1/Q1  
UNI 9175, 1IM  
Cal. Tech. Bull. 117, Sec. E  
IMO A.652(16)

**Care**

Dry clean or clean with foam  
detergents.



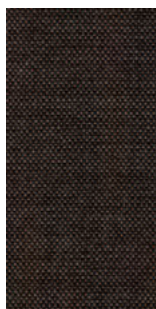
0575/13



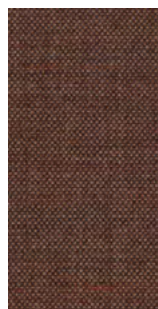
Flame Resistant



EU  
Ecolabel  
www.ecolabel.eu  
06/16/24



356



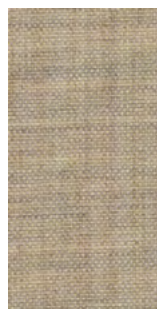
346



326



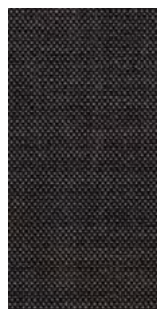
242



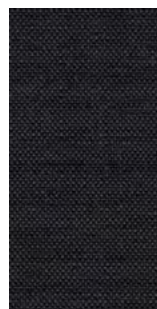
223



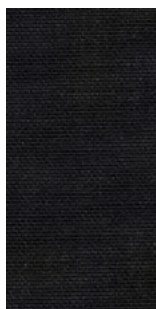
233



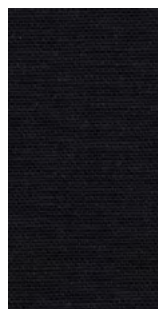
276



286



393



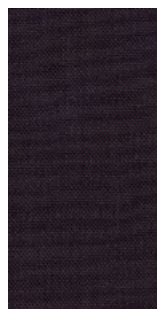
296



686



682



692



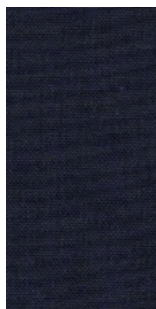
783



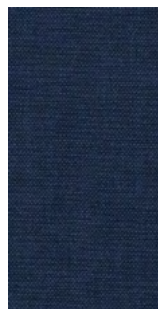
266



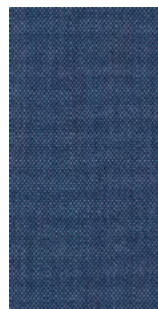
606



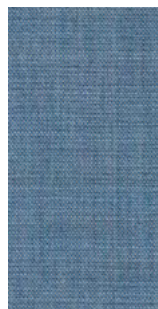
773



866



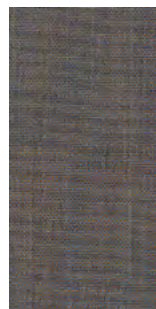
762



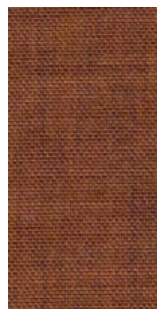
816



823



722



452



443

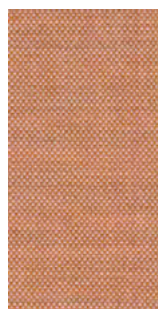
Cat C - Remix 3 KVADRAT



543



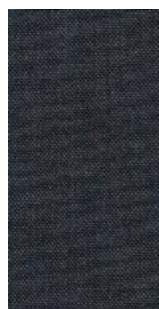
536



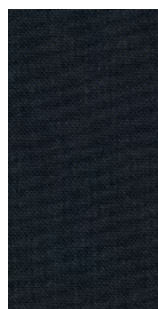
516



852



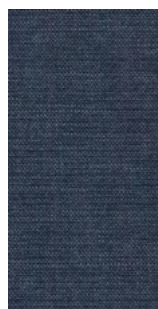
753



873



716



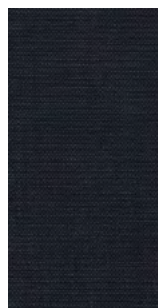
836



733



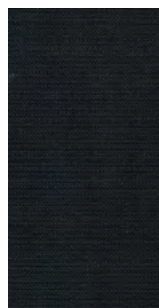
743



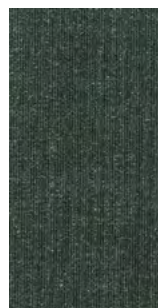
796



906



996



973



982



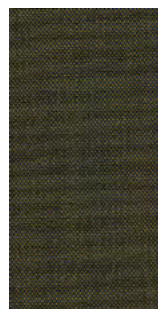
933



923



912



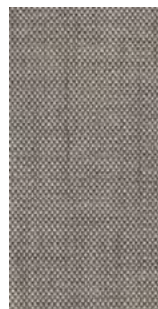
842



962



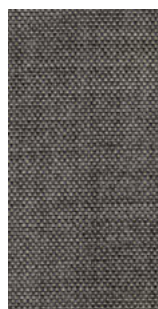
954



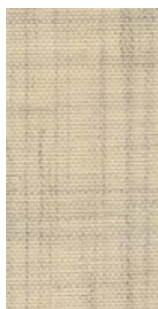
126



136



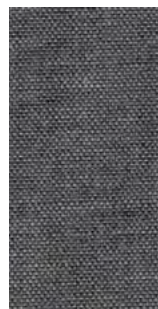
133



113



123



143



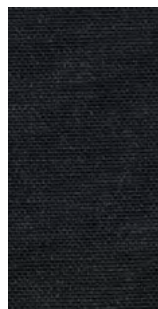
152



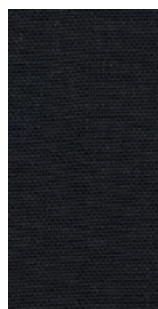
173



163



183



196



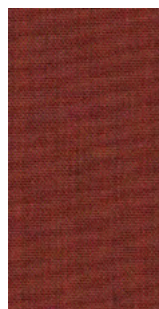
566



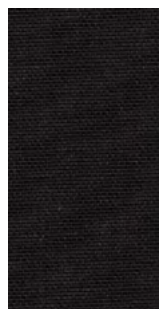
643



632



653



383



662



373

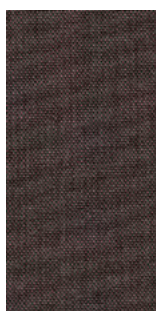


362



tessuto / fabric / Stoff / tissu / tejido

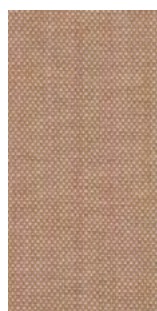
Cat C - Remix 3 KVADRAT



672



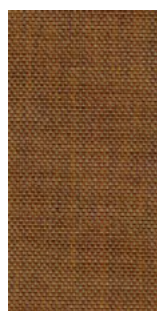
612



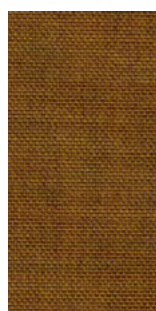
406



252



433



422



412



942

tessuto / fabric / Stoff / tissu / tejido

Cat C - Tonica 2 KVADRAT

**Design**

Georgina Wright

**Application**

Offices, hotels,  
institutions, domestic use.

**Description**

Composition:  
100% new wool

Yarn type: Stapel

Binding: Plain

Width: 140 cm

Weight: app. 700 g/lin.m

**Tests**

Abrasion  
App. 45.000 Martindale rubs,  
EN ISO 12947

Pilling  
Note 4-5, EN ISO 12945

Light fastness  
Note 5-7, ISO 105-B02

Flame resistance  
EN 1021-1/2  
BS 5852, ignition source 2-4  
DIN 4102 B2  
Önorm B1/Q1  
UNI 9175/UNI 9176, 1IM  
Cal. Tech. Bull. 117, Sec. E  
IMO A.652(16)

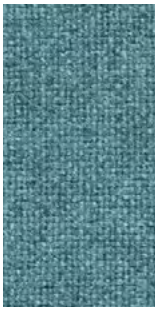
**Care**

Vacuuming and dry cleaning

Samples are purely indicative because of natural inconsistencies that occur in the raw materials. As a result there may be small differences in the product delivered.



Cat C - Tonica 2 KVADRAT



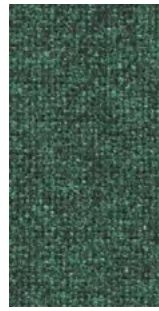
831



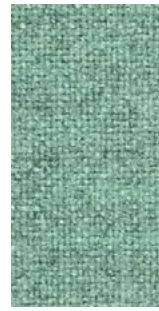
832



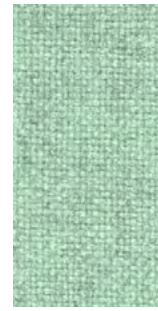
873



962



933



923



613



523



533



511



543



531



611



643



612



Cat C - Lapalma Smart

**Application**

Contract and domestic use

**Description**

Composition:  
100% SOLUTION DYED ACRILIC  
Width: 140cm  
Weight Gr./mtl.: 700

**Tests**

Shrinkage after dry cleaning  
Warp: -1 % Weft: -1 %

Shrinkage after washing  
Warp: -3 % Weft: -3 %

Resistance to PILLING  
after 2000 cycles  
Note 4 EN ISO 12945-2

Abrasion  
20000 Cicli EN ISO 12947-2

Light fastness  
Note 7/8 EN ISO105B02

Color fastness to washing  
Note 5 EN ISO105C06

Color fastness to dry Cleaning  
Note 5 EN ISO105D01

Color fastness  
to crocking Test WET  
Note 4/5 EN ISO105X12

Color fastness  
to crocking Test DRY  
Note 5 EN ISO105X12

**Care**

Cleaning: Vacuuming  
Mount in moist condition.  
Mildew growth is not promoted  
by the textile but mildew may  
grow on dirt and other foreign  
substances if not removed.  
Keep the textile dry to avoid  
mildew spores to stick.

Samples are purely indicative because of natural inconsistencies that occur in the raw materials. As a result there may be small differences in the product delivered.



tessuto / fabric / Stoff / tissu / tejido

Cat D - Divina MD KVADRAT

**Design**

Finn Skodt

**Application**

Offices, hotels,  
institutions, domestic use.

**Description**

Composition:  
100% new wool  
Yarn type: Stapel  
Binding: 4-end broken twill  
Width: 150 cm  
Weight: app. 820 g/lin.m

**Tests**

Abrasion  
App. 45.000 Martindale rubs,  
EN ISO 12947

Pilling  
Note 3, EN ISO 12945

Light fastness  
Note 5-7, ISO 105-B02

Flame resistance  
EN 1021-1/2  
BS 5852, ignition source 2-5  
DIN 4102 B2  
Onorm B1/Q1  
NF D 60 013  
UNI 9175 1IM  
US Cal. Tech. Bull. 117  
AS.NZS 1530.3  
IMO A.652(16)

**Care**

Dry clean or clean with foam  
detergents.

**Samples are purely indicative because of natural inconsistencies that occur in the raw materials. As a result there may be small differences in the product delivered.**



0575/13



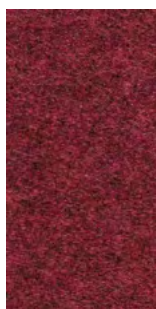
Flame Resistant



193 353 343 363 453 213 413 203  
913 943 973 873 843 813 293 783  
713 733 743 753 773 683 673 653

tessuto / fabric / Stoff / tissu / tejido

Cat D - Divina MD KVADRAT



633



613



433

tessuto / fabric / Stoff / tissu / tejido

Cat D - Divina Melange 3 KVADRAT

**Design**

Finn Sködt

**Application**

Offices, hotels, institutions, domestic use.

**Description**

Composition:

100% New wool

Yarn type: Stapel

Binding: 4-end broken twill

Width: 150 cm

Weight: app. 820 g/lin.m

**Tests**

Abrasion  
App. 45.000 Martindale rubs  
EN ISO 12947

Pilling  
Note 3, EN ISO 12945

Light fastness  
Note 7, ISO 105-B02

Flame resistance  
EN 1021-1/2  
BS 5852, ignition source 2-5 DIN 4102 B2  
Önorm B1/Q1  
UNI 9175/UNI 9176, 11M  
US Cal. Tech. Bull. 117  
IMO A.652(16)

**Care**

Dry clean or clean with foam detergents.

Samples are purely indicative because of natural inconsistencies that occur in the raw materials. As a result there may be small differences in the product delivered.



0575/13



Flame Resistant



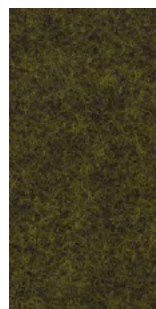
WOOLS OF NEW ZEALAND



427



457



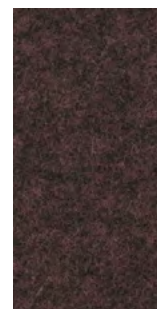
471



467



617



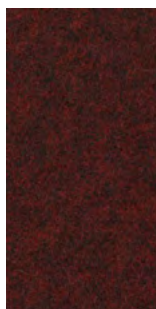
677



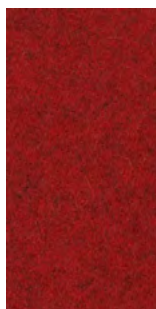
581



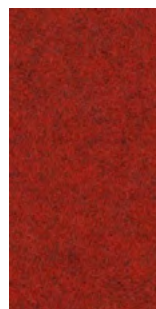
620



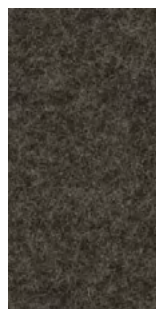
597



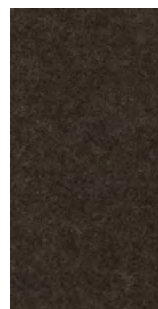
567



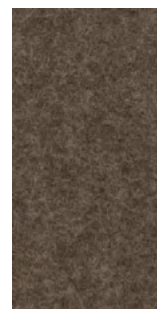
557



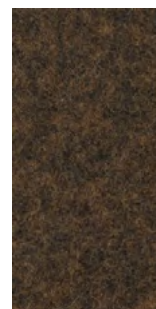
277



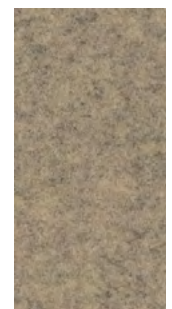
280



260



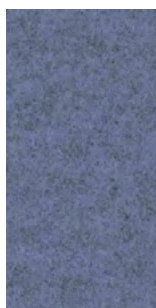
367



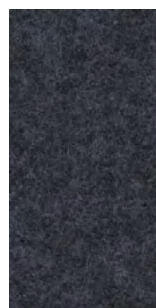
237



227



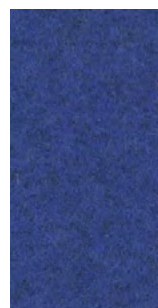
647



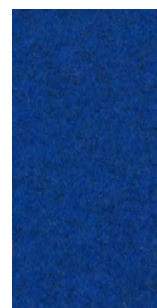
687



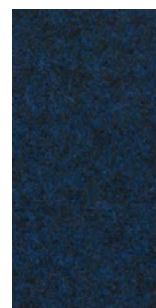
787



747



757



777

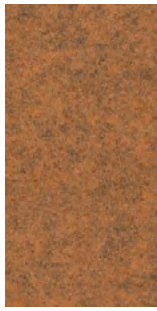


731

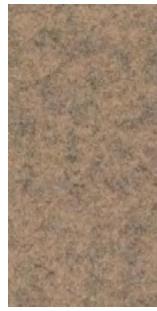
Cat D - Divina Melange 3 KVADRAT



547



527



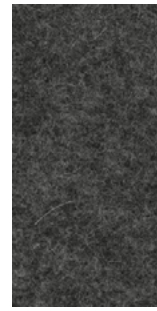
517



571



180



170



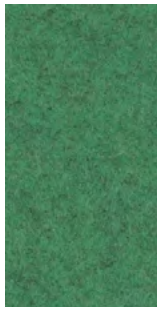
147



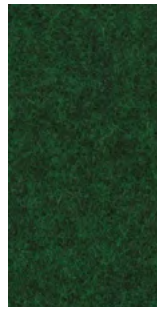
120



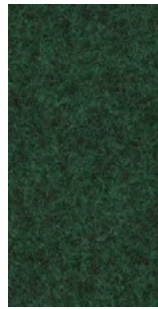
917



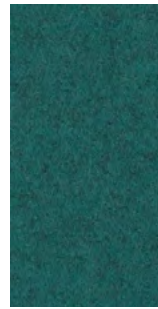
937



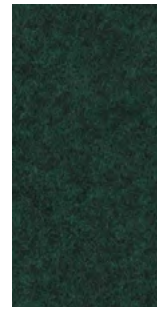
977



967



821



871



tessuto / fabric / Stoff / tissu / tejido

Cat D - Steelcut 2 KVADRAT

**Design**

Frans Dijkmeijer  
Giulio Ridolfo

Width: 140 cm

Weight: app. 825 g/lin.m

Flame resistance

EN 1021-1/2  
BS 5852, ignition source 2  
DIN 4102 B2  
Onorm B1/Q1  
Italian Class 1IM  
US Cal. Tech. Bull. 117  
IMO A.652(16)

**Application**

Offices, hotels,  
institutions, domestic use.  
Great durability

**Tests**

Abrasion  
App. 100.000 Martindale rubs,  
EN ISO 12947

Pilling  
Note 3-4, EN ISO 12945

**Care**

Vacuuming and dry cleaning.

**Description**

Composition:  
90% new wool, 10% nylon  
Yarn type: Stapel, worsted  
Binding: Semi-plain

Light fastness  
Note 5-7, ISO 105-B02

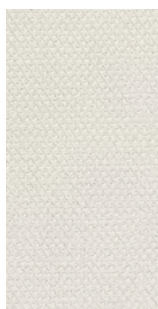
Samples are purely indicative because of natural inconsistencies that occur in the raw materials. As a result there may be small differences in the product delivered.



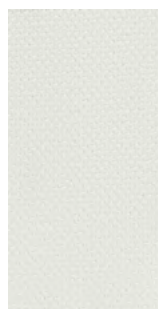
Cat D - Steelcut 2 KVADRAT



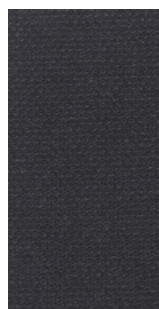
140



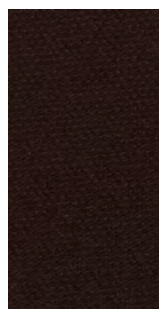
220



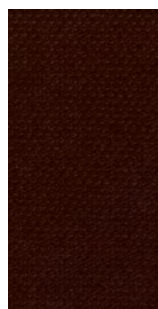
110



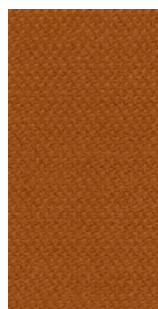
380



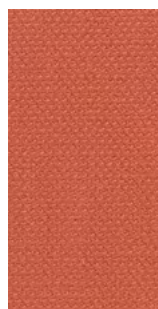
695



655



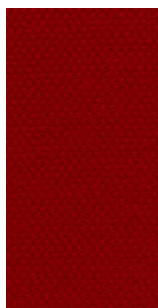
535



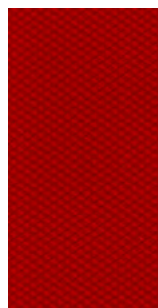
550



660



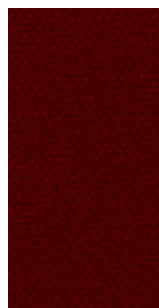
635



545



605



615

tessuto / fabric / Stoff / tissu / tejido

Cat D - Steelcut Trio 3 KVADRAT

**Design**

Frans Dijkmeijer  
Giulio Ridolfo

Width: 140 cm

Weight: app. 770 g/lin.m

Flame resistance

EN 1021-1/2

BS 5852, ignition source 2

DIN 4102 B2

Onorm B1/Q1

Italian Class 1IM

US Cal. Tech. Bull. 117

IMO A.652(16)

**Application**

Offices, hotels,  
institutions, domestic use.  
Great durability

**Tests**

Abrasion

App. 100.000 Martindale rubs,

EN ISO 12947

Pilling

Note 3-4, EN ISO 12945

**Description**

Composition:

90% new wool, 10% nylon

Yarn type: Stapel, worsted

Binding: Semi-plain

Light fastness

Note 5-7, ISO 105-B02

**Care**

Vacuuming and dry cleaning.

Samples are purely indicative because of natural inconsistencies that occur in the raw materials. As a result there may be small differences in the product delivered.



0575/13

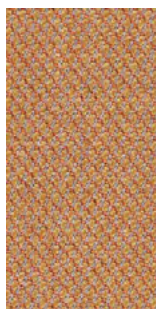


WOOL  
OF  
NEW ZEALAND

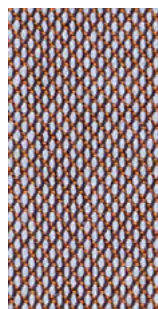


EU  
Ecolabel  
www.ecolabel.eu

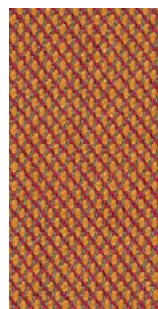
DK/16/24



436



416



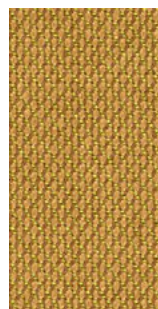
576



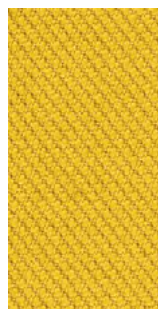
426



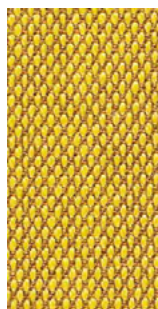
476



466



446



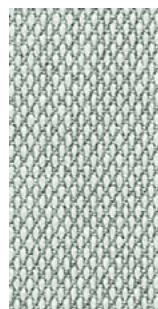
453



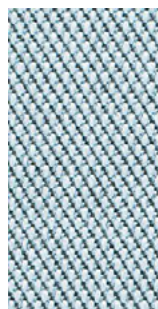
236



105



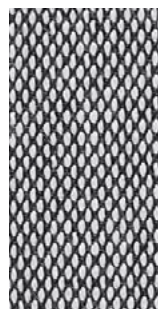
113



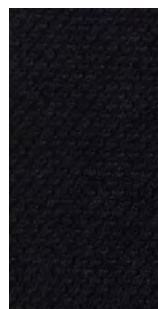
713



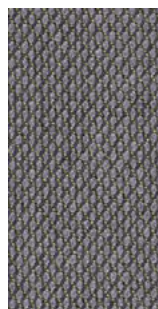
153



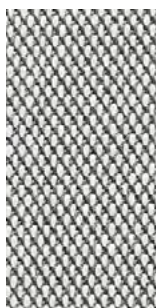
124



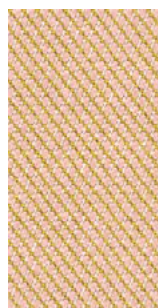
195



176



133



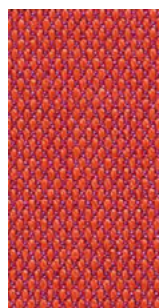
506



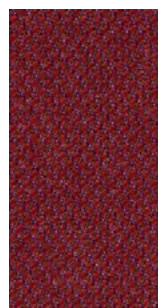
616



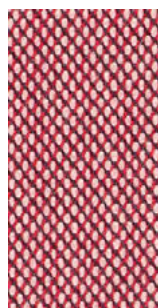
645



553



686

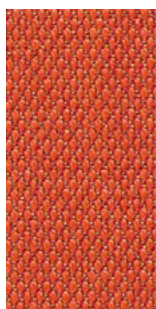


636

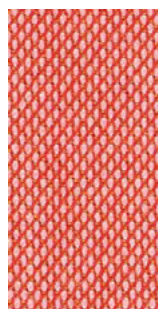


666

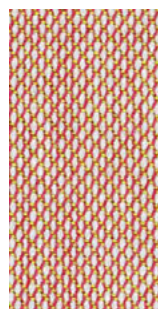
Cat D - Steelcut Trio 3 KVADRAT



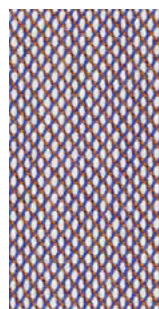
533



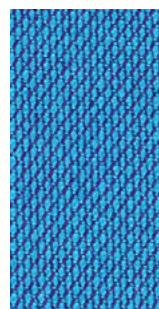
526



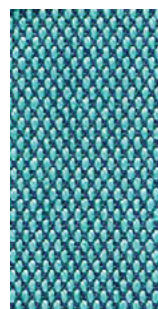
515



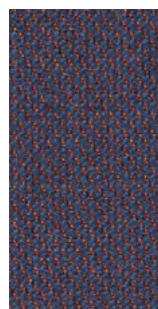
806



865



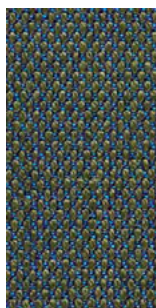
983



776



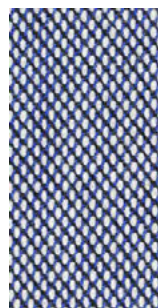
756



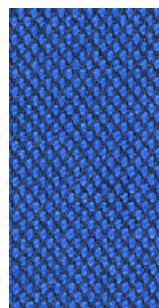
883



796



716



746



266



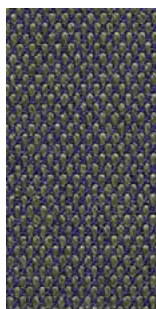
253



205



246



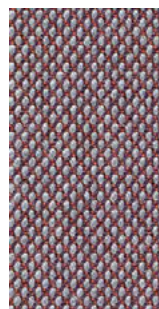
283



376



383



276



336



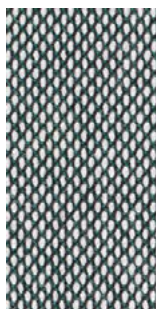
226



213



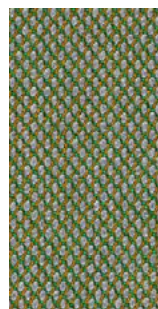
996



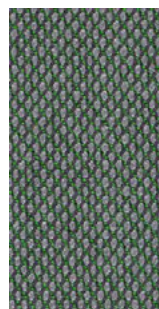
916



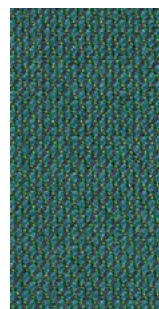
906



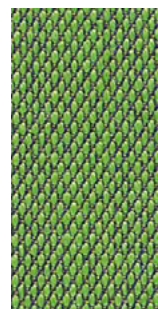
946



966



976



953

tessuto / fabric / Stoff / tissu / tejido

Cat E - Uniform Melange KVADRAT (Fabric to upholster SCREEN tubes only)

**Design**

Febrik

**Application**

Contract and domestic use.

**Description**

Composition:

68% new wool, 22% viscose

10% polyester 2mm foam

Width: 165 cm

Weight: app. 870 g/lin.m

**Tests**

Abrasion

App. 100.000 Martindale rubs,  
EN ISO 12947

Pilling

Note 4, EN ISO 12945

Light fastness

6, ISO 105-B02

Flame resistance

EN 1021-1/2

BS 5852,part 1

DIN 4102 B2

Onorm B1/Q1

UNI 9175/UNI 9176, 11M

US Cal. Tech. Bull. 117.2013

IMO FTP code 2010:part 8

**Care**

Dry clean or clean with foam  
detergents.

Samples are purely indicative because of natural inconsistencies that occur in the raw materials. As a result there may be small differences in the product delivered.



Cat E - Uniform Melange KVADRAT



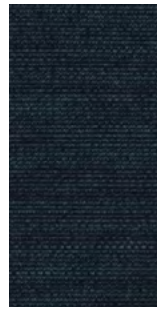
813



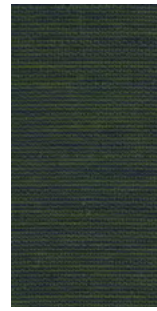
963



833



883



983



993



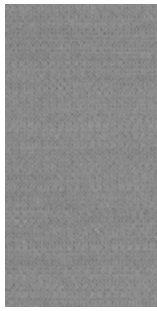
453



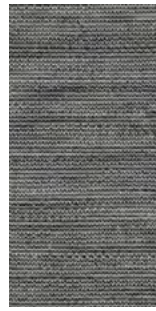
933



913



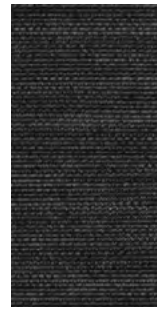
123



133



163



183



193

# eco pelle / eco-leather / Kunstleder / simil cuir / ecopiel

## Cat A - Grimm Fr MP

### Application

Contract and domestic use

### Description

#### Composition

31% CO - 68% PVC- 1% PU

Weight g/m2 640

Width cm 140

### Tests

#### Abrasion

resistance cicli / cycles EN ISO 5470-2  
150000

#### Colour fastness to light (Xenotest)

UNI EN ISO 105-B02 7 colour change

#### Dry rubbing

ISO 105 X-12 4/5

#### Wet rubbing

ISO 105 X-12 4/5

#### Acid perspiration

ISO 105 E-04 4/5

#### Alcaline perspiration

ISO 105 E-04 4/5

#### Bending strenght cycles

UNI 4818-13 150000

#### Tensile strenght

ISO1421, Met.1 550 N warp, 300N weft

#### Tear strenght

ISO 4674-1 40 N warp, 45N weft

### Flame resistance

EN 1021-1 EN 1021-2

NF D 60-013

UNI 9175 CL. 1IM

BS 5852 crib 5

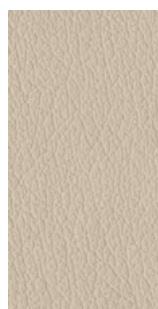
### Care

Clean with a damp cloth  
and mild soap.

Samples are purely indicative because of natural inconsistencies that occur in the raw materials. As a result there may be small differences in the product delivered.



1C8



4P2



4H8



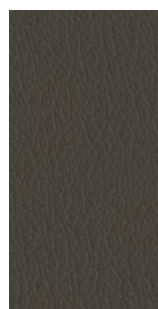
5P4



101



2PB



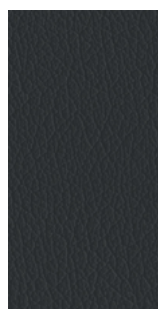
2C7



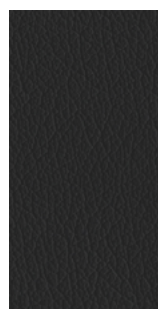
5H3



5PE



2PA



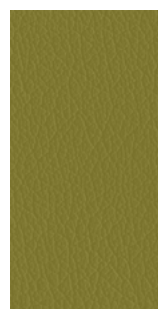
2DJ



901



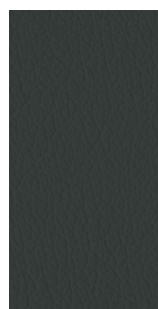
3CS



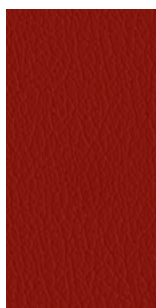
7P5



7FC



7EM



6VZ



6P1



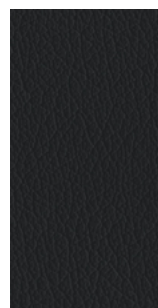
6KH



6P7



8P8



8H4



8P9



5P3

eco pelle / eco-leather / Kunstleder / simil cuir / ecopiel

Cat B - Valencia C5 SPRADLING

**Application**

Contract and domestic use.

**Description**

Composition:  
front PVC

back polyester cotton

Width: 137 cm

Weight: app. 890 g/lin.m

**Tests**

Abrasion  
App. 300.000 Martindale rubs  
EN ISO 12947 part 2

UV Xenotest DIN54004 blue wool scale

Antibacterial Protection

Flame resistance  
EN 1021-part 1/2  
BS 5852, part 2  
BS 5852 crib 5  
FMVSS 302  
FAR 25/853

**Care**

Dry clean or clean with foam  
detergents.

Samples are purely indicative because of natural inconsistencies that occur in the raw materials. As a result there may be small differences in the product delivered.





Cat B - Valencia C5 SPRADLING

							
7001 Amethyst	3068 Marine	2108 Night	3067 Delft	3001 Lavendel	3069 Baltic	5057 Türkis	2106 Coral
							
5056 Jade	2119 Teal	4043 Platin	5065 Petrol	4042 Titan	2107 Skylight	4040 Auster	4045 Perle
							
4044 Warm Grey	2116 Camel	2117 Cashmere	0035 Terracotta	2115 Chestnut	0033 Buche	9035 Schwarz	4003 Graphite
							
2109 Citrus	2110 Avocado	5041 Apfel	5001 Olive	5069 Grün	4052 Lichtgrau	4002 Laurel	4020 Silver
							
6020 Gold	1020 Ivory	8020 Pearlescence					

# pelle / soft -leather / Softleder / peau / piel

## Application

Contract and domestic use.

## Description

Thickness 0,9/1,0 mm

European raw hides

Chrome tannage

Through-dyeing Aniline

Finishing pigmented

Samples are purely indicative because of natural inconsistencies that occur in the raw materials. As a result there may be small differences in the product delivered.

## Tests

This item complies with the 3M test for oleo and hydro repellency. The Scotchgard treatment gives more protection and durability to leather.

Dry rub fastness  
UNI EN ISO 11640 > 3 Grey Scale

Light fastness  
UNI EN ISO 105-B02 > 3 Blue Scale

Tear resistance  
UNI EN ISO 3377-1 > 20 N

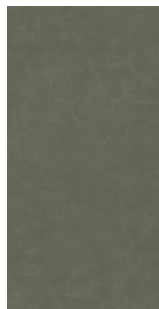
Flame resistance  
BS EN 1021-2:2006  
No Ignition  
BS EN 1021-1:2006  
No Ignition



EPD®

## Care

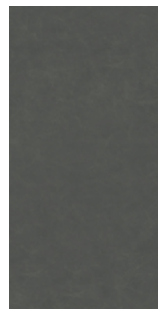
Dust with a soft and dry cloth for the normal cleaning. Stains can be treated with a wet cloth or cotton wool and with products for the cleaning initially more delicate like neutral soap or cleansing milk. Dry immediately after treatment. Never use abrasive or aggressive products like solvents, stain removers. Never steam it. Don't use shoe cleaning products. When a new product is used for cleaning, apply it in a "hidden" area to test its effectiveness and to avoid damages where more visible. Avoid placing leather near direct sun. Keep the leather away from heat sources. Dust regularly with a soft and dry cloth.



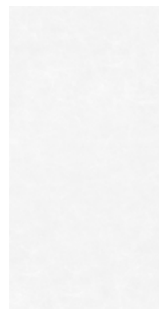
P3  
Fango chiaro



P10  
Grigio



P7  
Fango scuro



P4  
Bianco



P9  
Marrone scuro



P1  
Nero



P2  
Rosso

# cuoio / leather / Leder / cuir / cuero

## Application

Contract and domestic use.

## Description

Thickness 2.4 - 2.5 mm

Cow hides

Vegetable tannage

Finishing Pigmented

## Tests

Dry rub fastness  
UNI EN ISO 11640  
1000 cycles 5 Grey Scale

Wet rub fastness  
UNI EN ISO 11640  
250 cycles 5 Grey Scale

Light fastness  
UNI EN ISO 105-B01  
72h 4-5 Grey Scale

Adhesion of finishing  
UNI EN ISO 11644 >15 N/10mm

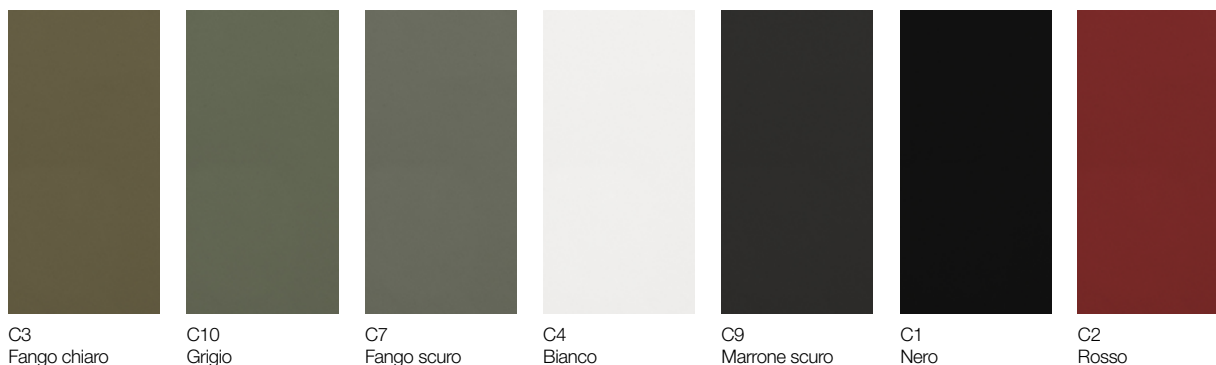
Flex resistance  
UNI EN ISO 5402  
20000 cycles no damages

Taber abrasion  
500 cycles CS10  
load 500 gr. 4-5 grey scale

## Care

Dust with a soft and dry cloth for the normal cleaning. Stains can be treated with a wet cloth or cotton wool and with products for the cleaning initially more delicate like neutral soap or cleansing milk. Dry immediately after treatment. Never use abrasive or aggressive products like solvents, stain removers. Never steam it. Don't use shoe cleaning products. When a new product is used for cleaning, apply it in a "hidden" area to test its effectiveness and to avoid damages where more visible. Avoid placing leather near direct sun. Keep the leather away from heat sources. Dust regularly with a soft and dry cloth.

**Samples are purely indicative because of natural inconsistencies that occur in the raw materials. As a result there may be small differences in the product delivered.**



# **lapalma**

via majorana 26  
35010 cadoneghe (PD), italy  
t.: +39 049 702788  
[info@lapalma.it](mailto:info@lapalma.it)  
[www.lapalma.it](http://www.lapalma.it)